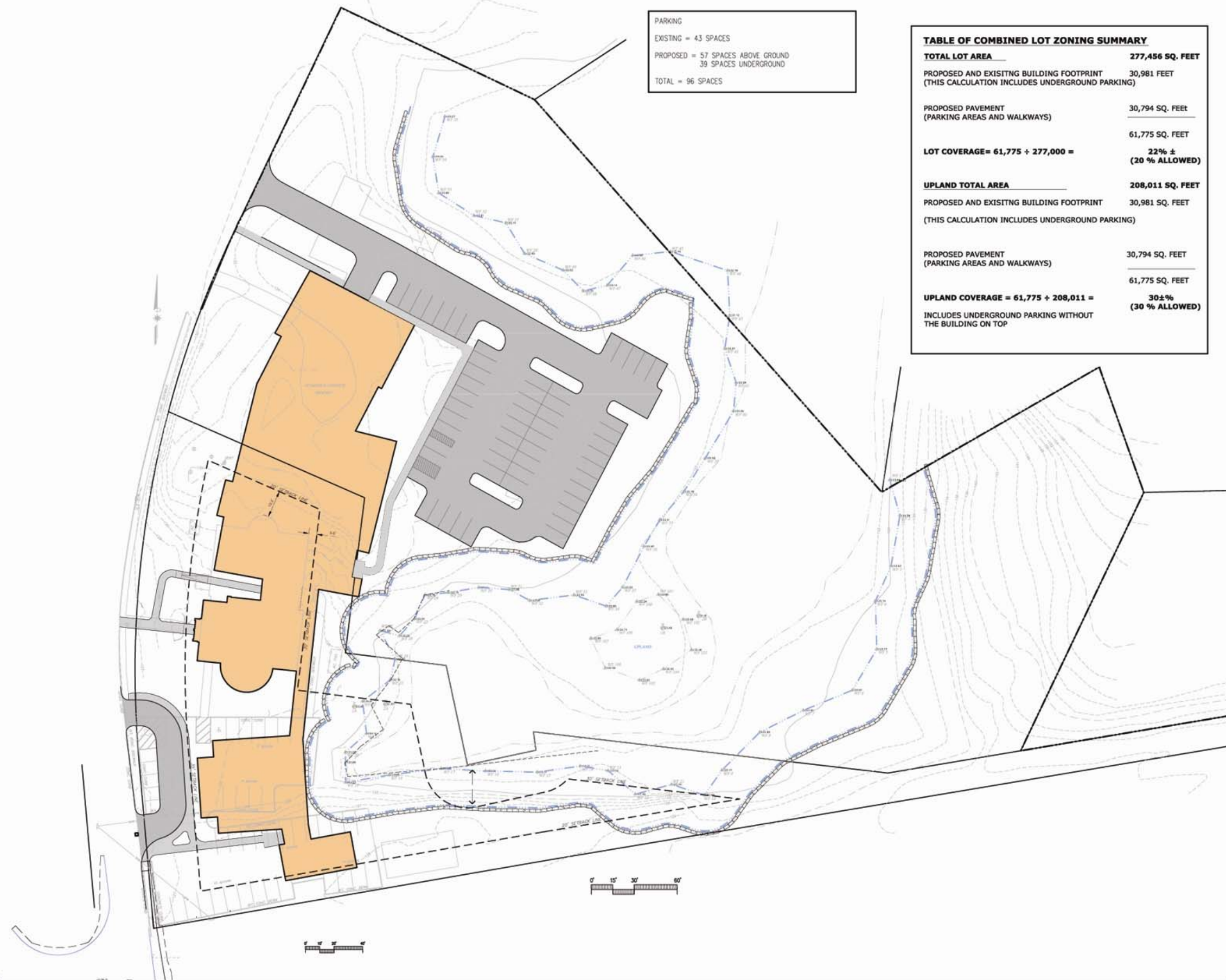


**DESIGN ALTERNATE A**



# A. Adjacent House Integrated



PARKING  
 EXISTING = 43 SPACES  
 PROPOSED = 57 SPACES ABOVE GROUND  
 39 SPACES UNDERGROUND  
 TOTAL = 96 SPACES

| TABLE OF COMBINED LOT ZONING SUMMARY  |                                |
|---|--------------------------------|
| <b>TOTAL LOT AREA</b>   | <b>277,456 SQ. FEET</b>        |
| PROPOSED AND EXISTING BUILDING FOOTPRINT<br>(THIS CALCULATION INCLUDES UNDERGROUND PARKING) | 30,981 FEET                    |
| PROPOSED PAVEMENT<br>(PARKING AREAS AND WALKWAYS)   | 30,794 SQ. FEET                |
|   | 61,775 SQ. FEET                |
| <b>LOT COVERAGE = 61,775 ÷ 277,000 =</b>  | <b>22% ±<br/>(20% ALLOWED)</b> |
| <b>UPLAND TOTAL AREA</b>  | <b>208,011 SQ. FEET</b>        |
| PROPOSED AND EXISTING BUILDING FOOTPRINT<br>(THIS CALCULATION INCLUDES UNDERGROUND PARKING) | 30,981 SQ. FEET                |
| PROPOSED PAVEMENT<br>(PARKING AREAS AND WALKWAYS)   | 30,794 SQ. FEET                |
|   | 61,775 SQ. FEET                |
| <b>UPLAND COVERAGE = 61,775 ÷ 208,011 =</b>   | <b>30% ±<br/>(30% ALLOWED)</b> |
| INCLUDES UNDERGROUND PARKING WITHOUT THE BUILDING ON TOP                                    |                                |

**WAYLAND  
 LIBRARY**

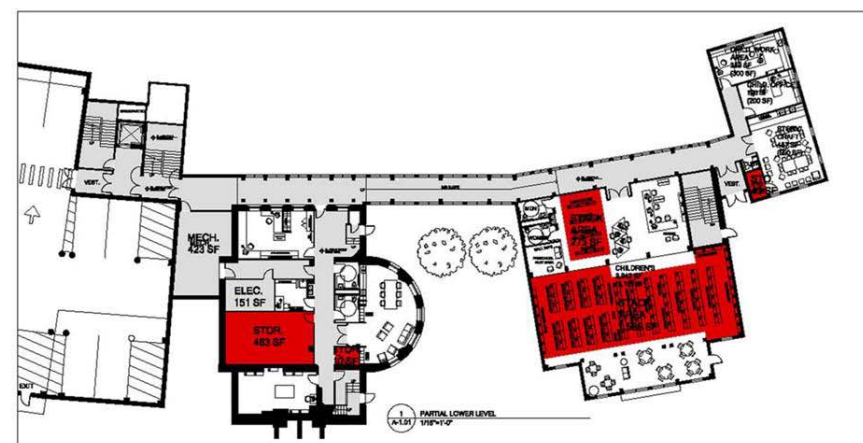
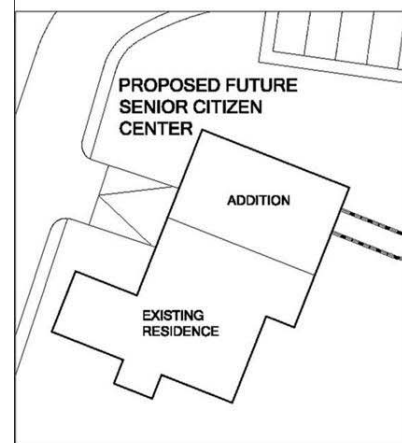
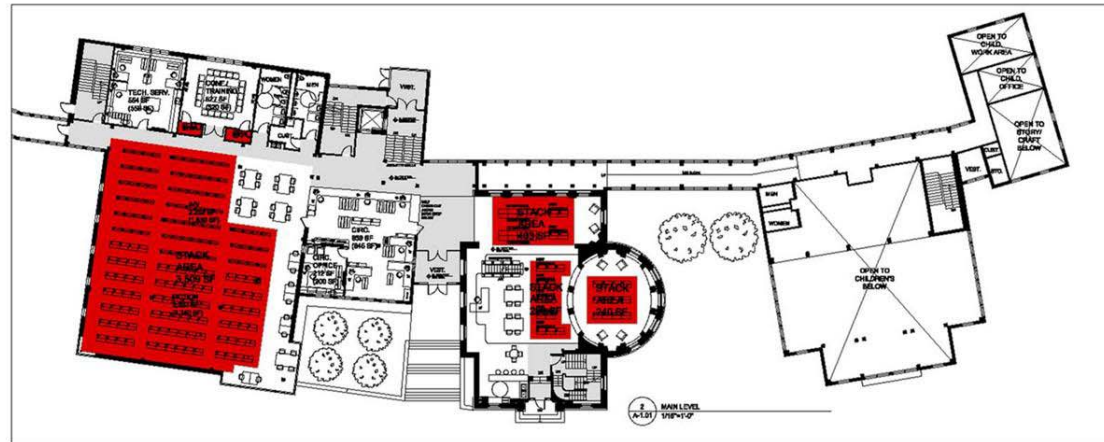
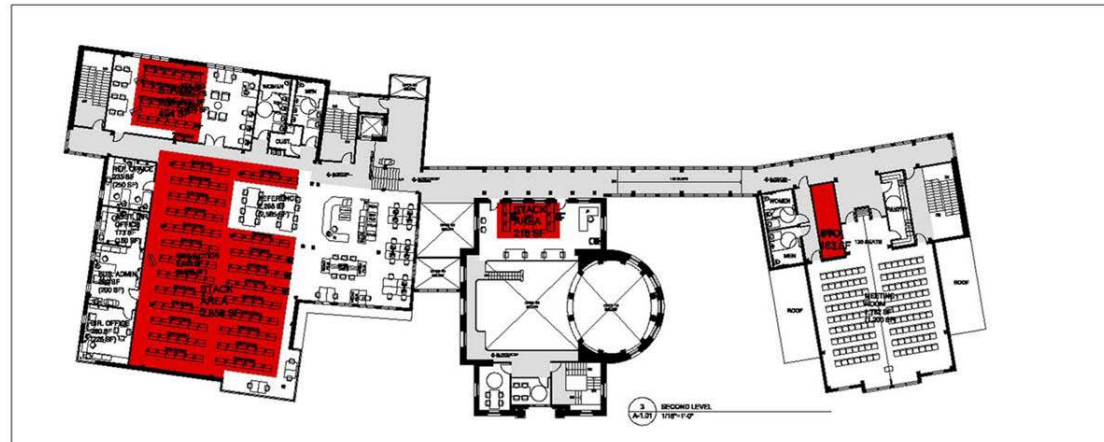
**WAYLAND  
 MASSACHUSETTS**

**G** Geller DeVellis Inc.  
 Site Planning  
 Civil Engineering  
 Landscape Architecture  
 G E L L E R  
 D E V E L L I S  
 29 Washington Street  
 Wellesley, MA 02481  
 781.237.4111

SCALE: 1" = 20'  
 JOB: 24082 PO  
 FILE: 24082-2 24.08  
 DRAWN: CRM  
 CHECKED: AMT  
 DATE: 3.17.08

# Potential Parking Reductions

## A. Adjacent House Integrated



PARKING ASSUMPTIONS (BASED ON CHAPTER 198, 506.1.2 - OFFICE, PROFESSIONAL, PUBLIC BUILDINGS):

### BULK STORAGE DEDUCTIONS:

SECOND LEVEL TOTAL SF: 16,205  
MINUS BULK STORAGE AREA: 3,731  
REDUCED SF: 12,474

MAIN LEVEL TOTAL SF: 13,709  
MINUS BULK STORAGE AREA: 4,486  
REDUCED SF: 9,223

LOWER LEVEL TOTAL SF: 12,003  
MINUS BULK STORAGE AREA: 2,385  
REDUCED SF: 9,618

### CIRCULATION, MECH., & ELEC. DEDUCTIONS:

SECOND LEVEL TOTAL SF: 12,474  
MINUS CIRC., MECH. & ELEC AREA: 3,441  
REDUCED SF: 9,033

1 SPACE/400 SF: 23 SPACES

MAIN LEVEL TOTAL SF: 9,223  
MINUS CIRC., MECH. & ELEC AREA: 2,705  
REDUCED SF: 6,518

1 SPACE/200 SF: 33 SPACES

LOWER LEVEL TOTAL SF: 9,618  
MINUS CIRC., MECH. & ELEC AREA: 4,007  
REDUCED SF: 5,611

1 SPACE/400 SF: 15 SPACES

TOTAL REQUIRED: 71 SPACES

### SENIOR CITIZEN CENTER:

SECOND LEVEL TOTAL SF: 2,000 approx.

1 SPACE/400 SF: 5 SPACES

MAIN LEVEL TOTAL SF: 4,000 approx.

1 SPACE/200 SF: 20 SPACES

TOTAL REQUIRED: 25 SPACES

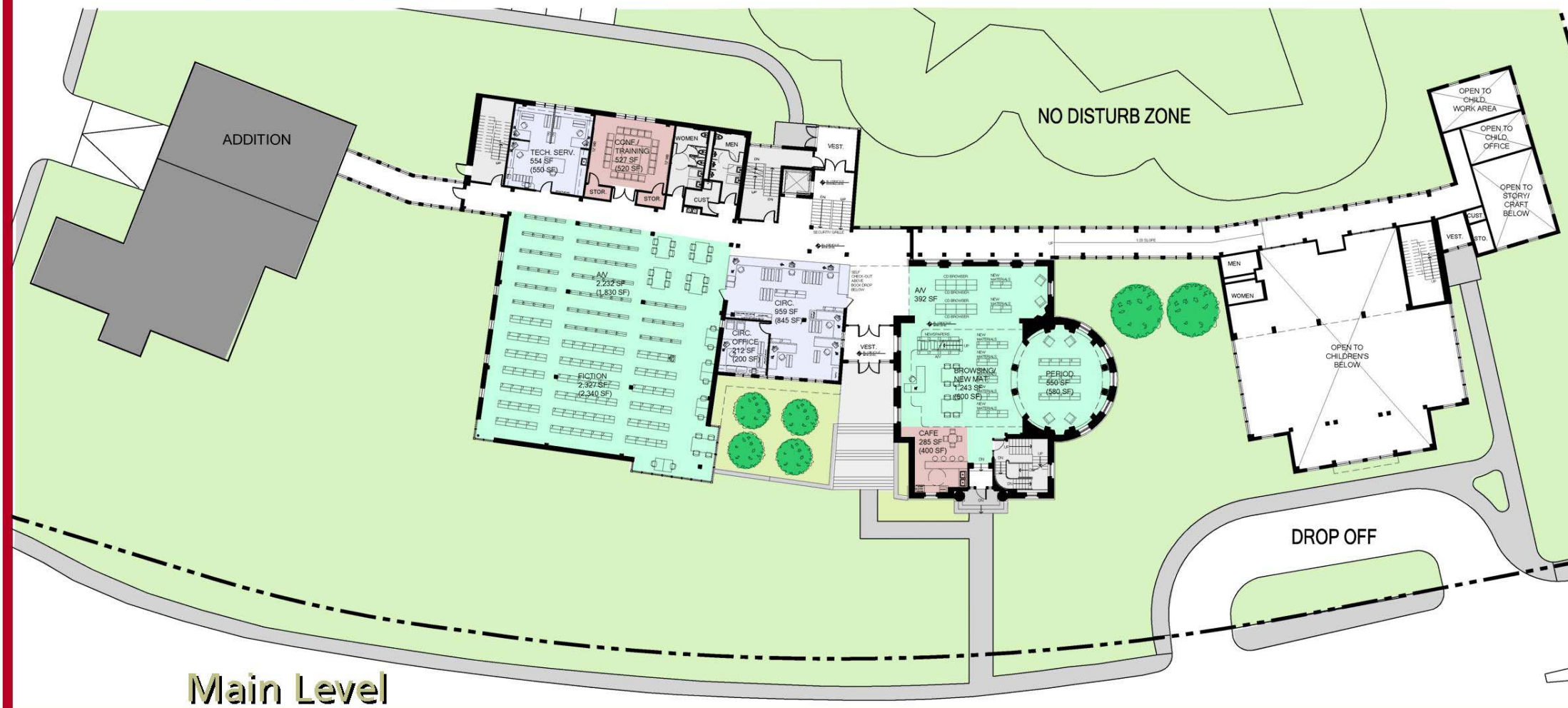


# Schematic Floor Plan and Elevation

## A. Adjacent House Integrated



### West Elevation



### Main Level

Wayland Free Public Library

January 10, 2005

Lerner | Ladds + Bartels, Inc

architecture | design

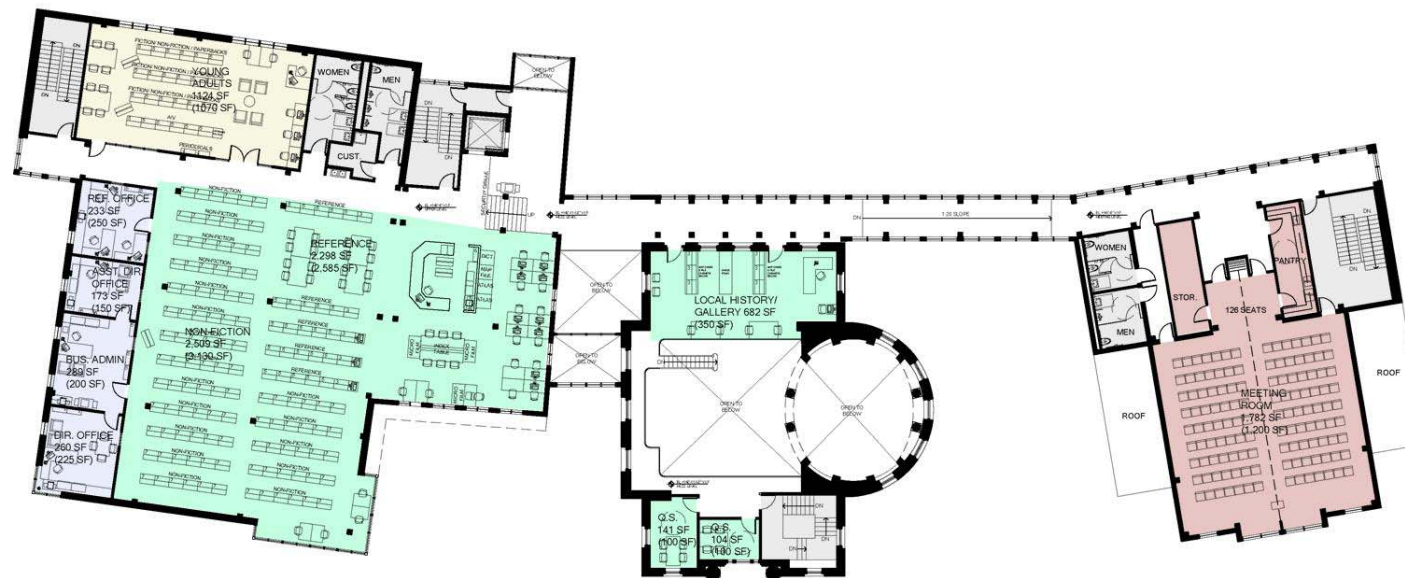


# Schematic Floor Plans

## A. Adjacent House Integrated



Second Floor



Lower Level



Wayland Free Public Library

January 10, 2005

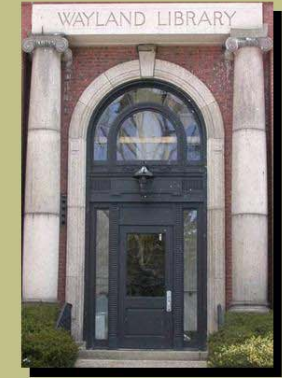
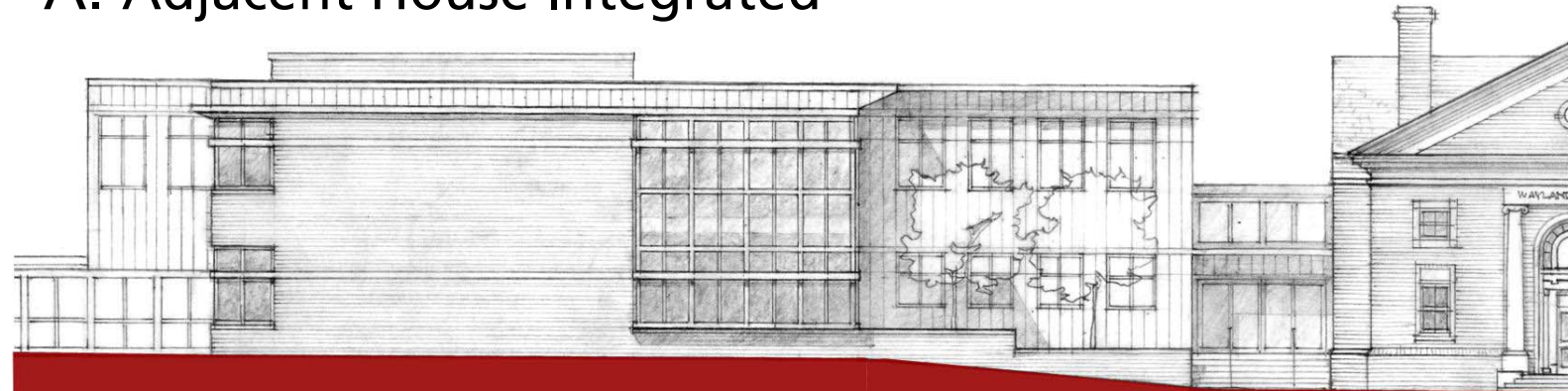
Lerner | Ladds + Bartels, Inc

architecture | design



# Enlarged Elevations

## A. Adjacent House Integrated



## West Elevation Study



Wayland Free Public Library

January 10, 2005

Lerner | Ladds + Bartels, Inc.  
architecture | design



# Schematic Building Perspective

## A. Adjacent House Integrated



Wayland Free Public Library

Lerner | Ladds + Bartels, Inc  
architecture | design

