



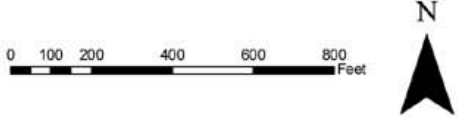
Wayland Library
Wayland Massachusetts

Created by:CRM
Filename:public.mxd

Geller DeVellis Inc.
Landscape Architecture.Civil Engineering.Site Planning
29 Washington Street
Wellesley, MA 02481

Land Use
10.25.04

Data Source: Data Source: "Office of Geographic and Environmental Information (MassGIS), Commonwealth of Massachusetts Executive Office of Environmental Affairs" photo from 2001



Sheet
H.10

PARKING	
EXISTING PARKING	43 SPACES
PROPOSED PARKING	70 +/- SPACES



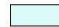
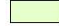

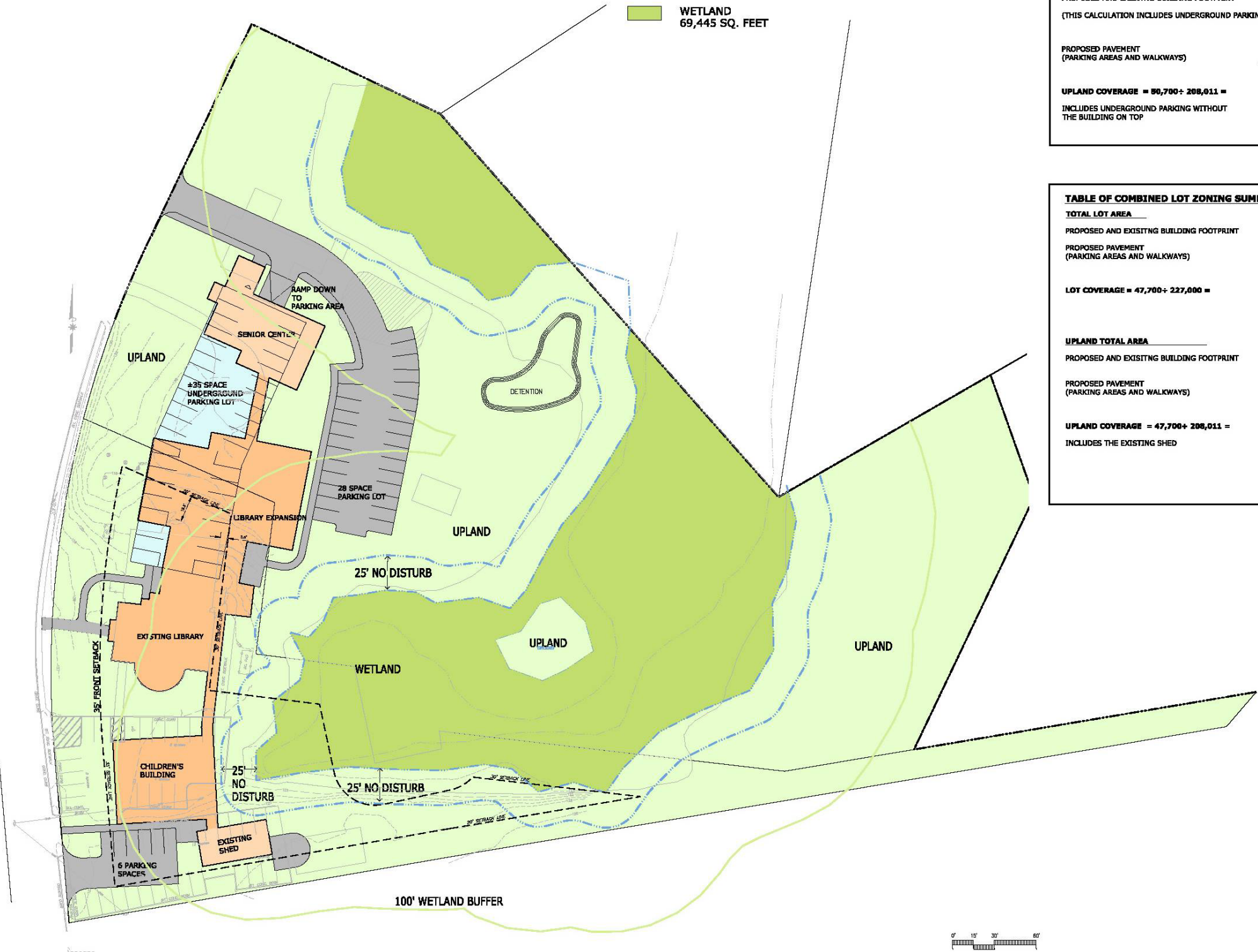
LEGEND	
	PROPOSED BUILDING COVERAGE 25,527 SQ. FEET
	PROPOSED PAVEMENT/ ROADS WALKWAYS AND PARKING 21,756 SQ. FEET
	PROPOSED UNDERGROUND PARKING WITH LANDSCAPE ABOVE 4200 SQ. FEET
	UPLAND 208,111 SQ. FEET
	WETLAND 69,445 SQ. FEET

TABLE OF COMBINED LOT ZONING SUMMARY	
TOTAL LOT AREA	277,456 SQ. FEET
PROPOSED AND EXISTING BUILDING FOOTPRINT (THIS CALCULATION INCLUDES UNDERGROUND PARKING)	30,409 SQ. FEET
PROPOSED PAVEMENT (PARKING AREAS AND WALKWAYS)	21,756 SQ. FEET
	52,126 SQ. FEET
LOT COVERAGE = $51,900 \div 227,000 =$	19 ± (20 % ALLOWED)
UPLAND TOTAL AREA	208,011 SQ. FEET
PROPOSED AND EXISTING BUILDING FOOTPRINT (THIS CALCULATION INCLUDES UNDERGROUND PARKING)	30,409 SQ. FEET
PROPOSED PAVEMENT (PARKING AREAS AND WALKWAYS)	21,756 SQ. FEET
	52,126 SQ. FEET
UPLAND COVERAGE = $80,700 \div 208,011 =$	25 ±% (30 % ALLOWED)
INCLUDES UNDERGROUND PARKING WITHOUT THE BUILDING ON TOP	

TABLE OF COMBINED LOT ZONING SUMMARY	
TOTAL LOT AREA	277,456 SQ. FEET
PROPOSED AND EXISTING BUILDING FOOTPRINT	25,527 SQ. FEET
PROPOSED PAVEMENT (PARKING AREAS AND WALKWAYS)	21,756 SQ. FEET
	47,283 SQ. FEET
LOT COVERAGE = $47,700 \div 227,000 =$	17 ± (20 % ALLOWED)
UPLAND TOTAL AREA	208,011 SQ. FEET
PROPOSED AND EXISTING BUILDING FOOTPRINT	25,527 SQ. FEET
PROPOSED PAVEMENT (PARKING AREAS AND WALKWAYS)	21,576 SQ. FEET
	47,283 SQ. FEET
UPLAND COVERAGE = $47,700 \div 208,011 =$	23 ±% (30 % ALLOWED)
INCLUDES THE EXISTING SHED	



WAYLAND LIBRARY

WAYLAND, MA

Lerner | Ladds + Bartels, Inc.
architecture | design
236 Hope Street
Providence, Rhode Island
401 421-7715
fax 421-7718
lberchitects.com

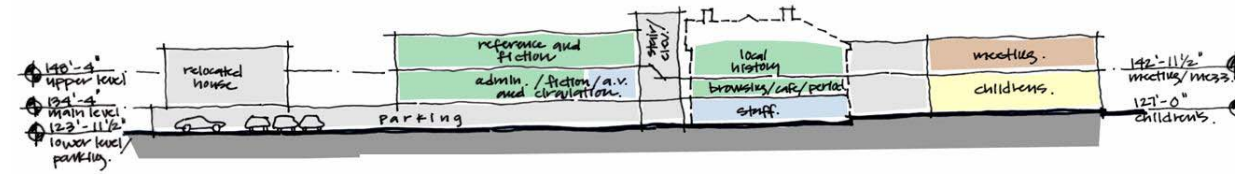
Geller DeVellis Inc.
Site Planning
Civil Engineering
Landscape Architecture
G E L L E R
D E V E L L I S
29 Washington Street
Wellesley, MA 02461
781.237 4111

FEASIBILITY STUDY
SITE PLAN

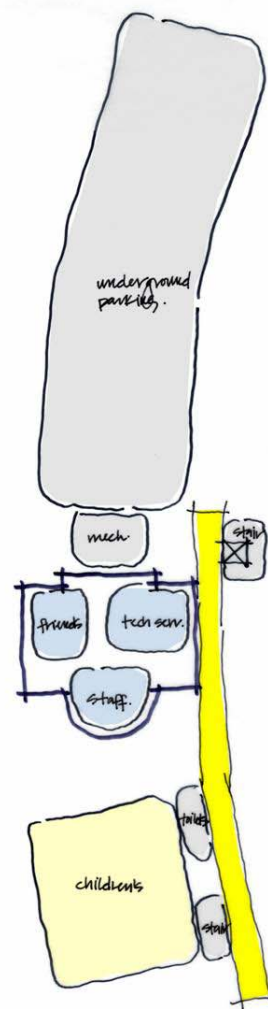
ADJACENT HOUSE
INTEGRATED

SCALE:	AS SHOWN
JOB:	24062.HD
FILE:	24062-0402
DRAWN:	CRV
CHECKED:	AMT
DATE:	10.28.24

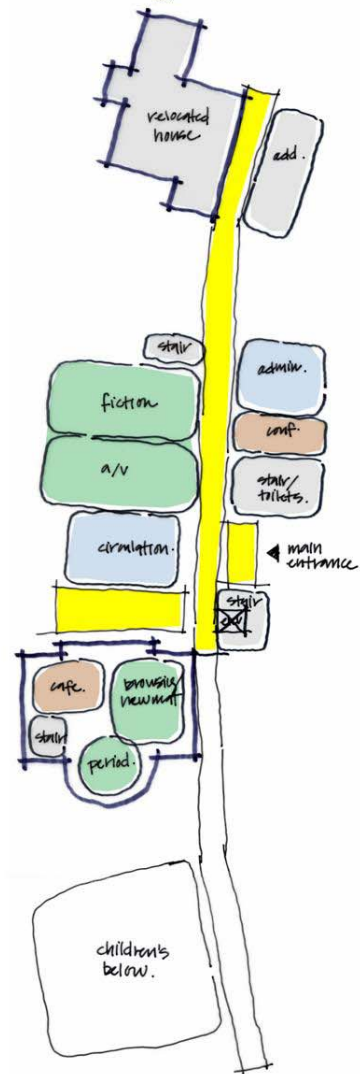
Program Diagrams



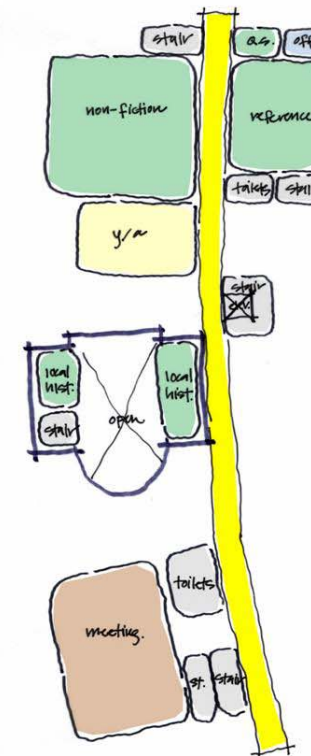
Building Section



Lower Level



Main Floor



Second Floor



Wayland Free Public Library

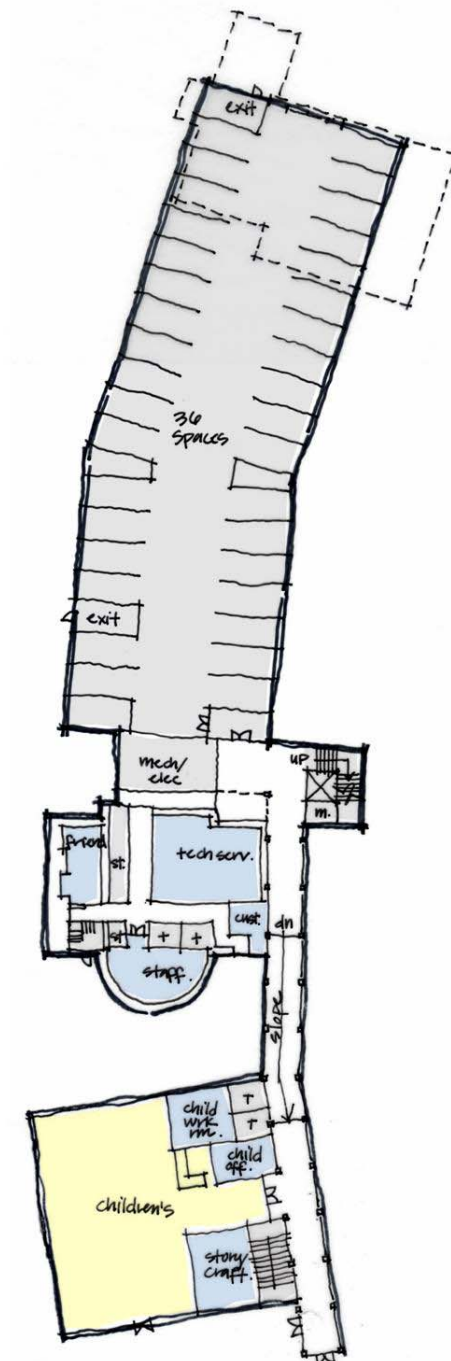
October 18, 2004

Lerner | Ladds + Bartels, Inc
architecture | design



Sheet
H.12

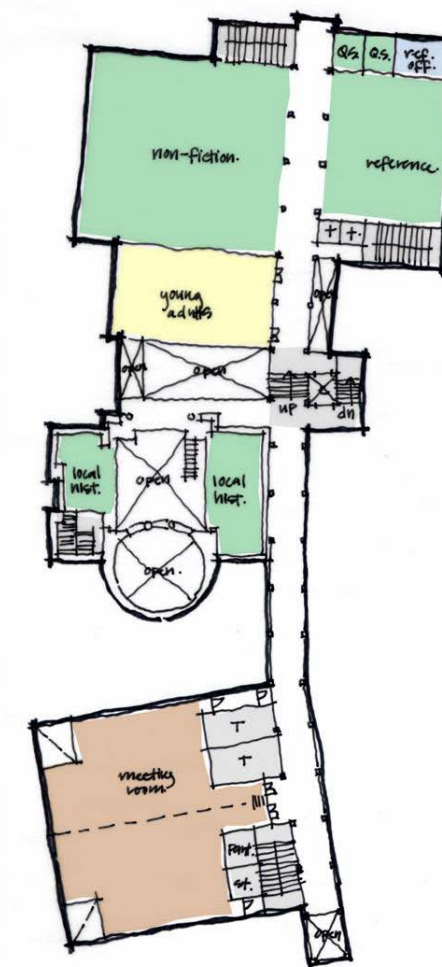
Schematic Floor Plans



Lower Level



Main Floor



Second Floor



Wayland Free Public Library

October 18, 2004

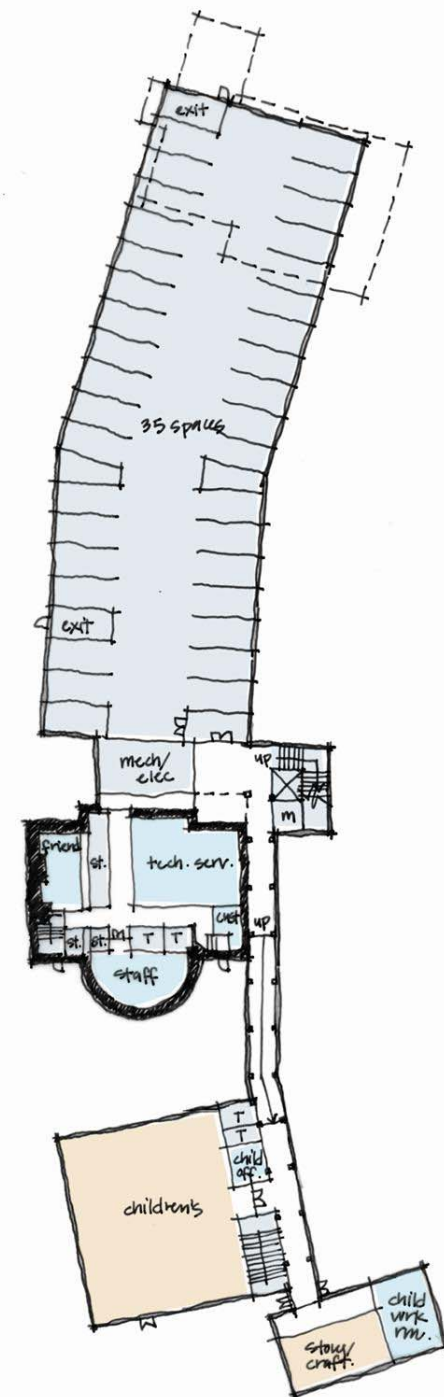
Lerner | Ladds + Bartels, Inc

architecture | design

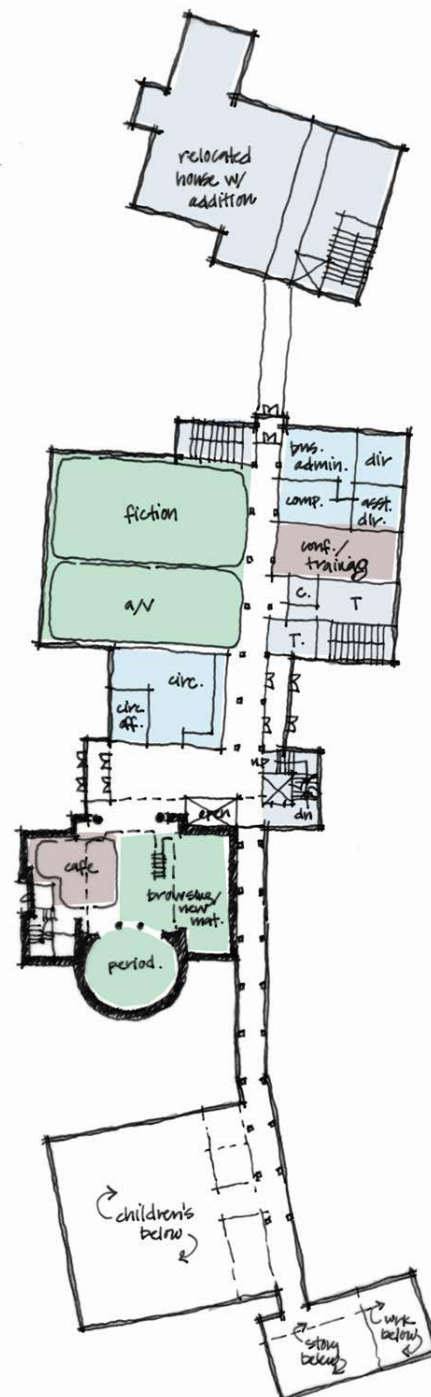


Sheet
H.13

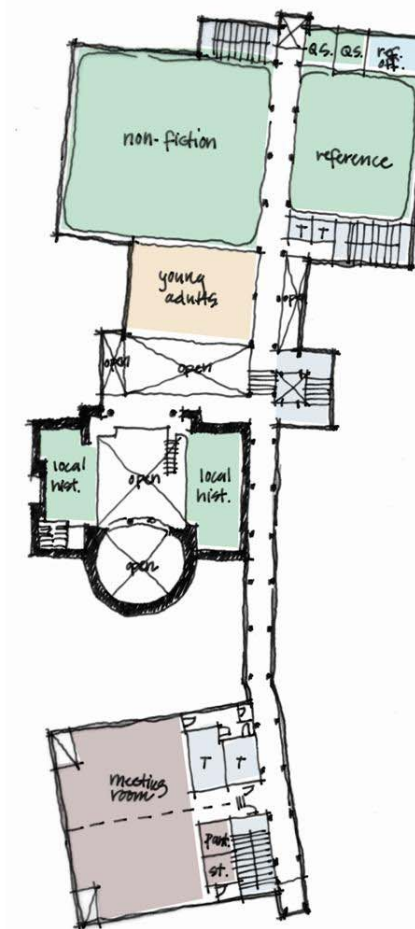
Schematic Floor Plans



Lower Level



Main Floor



Second Floor



Wayland Free Public Library

October 25, 2004

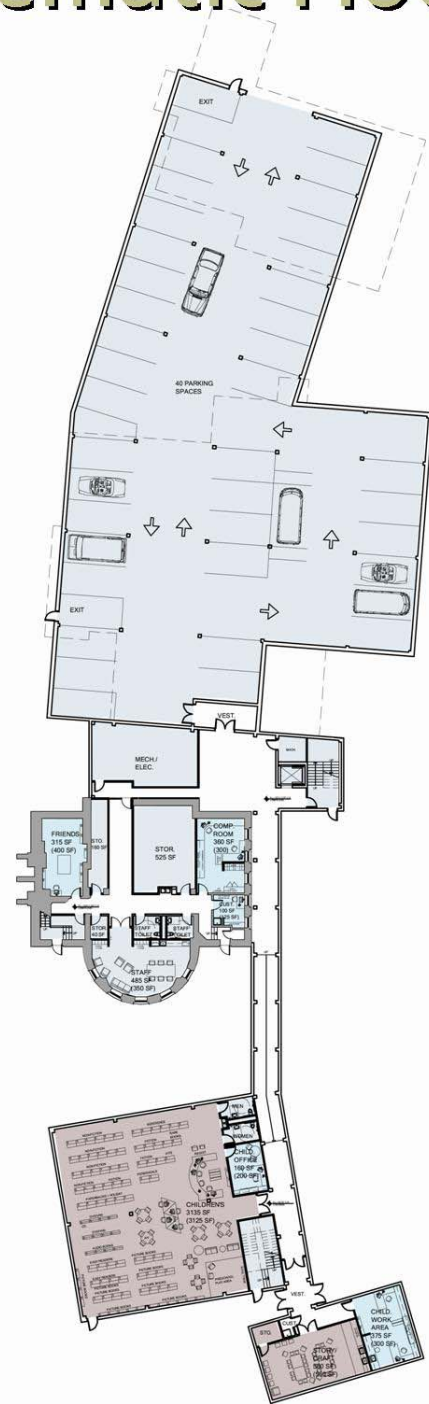
Lerner | Ladds + Bartels, Inc

architecture | design



Sheet
H.14

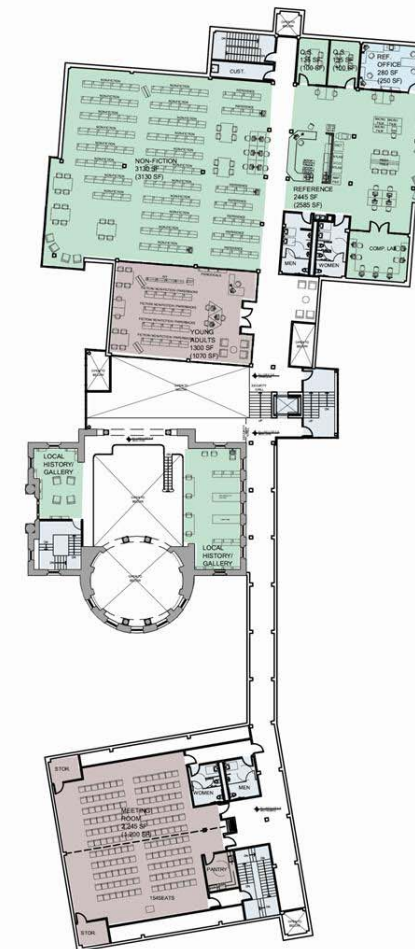
Schematic Floor Plans



Lower Level



Main Floor



Second Floor



Wayland Free Public Library

November 1, 2004

Lerner | Ladds + Bartels, Inc
architecture | design



Sheet
H.15