

MBLC Grant Application Submission & 1.26.17

Wayland Free Public Library

195 Main Street



TAPPÉ

ARCHITECTS, I N C .

ARCHITECTURE PLANNING

SIX EDGERLY PLACE

BOSTON MA 02116

PHONE: 617.451.0200

FAX: 617.451.3899

CLIENT
TOWN OF WAYLAND
41 COCHITUATE ROAD
WAYLAND, MA 01778
PHONE: (508) 358-7701
FAX: (508) 358-3627

VOLUME 1:2

LIST OF DRAWINGS

GENERAL

G-001 - TITLE SHEET

CIVIL

LANDSCAPE

STRUCTURAL

ARCHITECTURAL

ARCHITECTURAL

- A5100 SITE PLAN
- A100 BASEMENT PLAN
- A101 FIRST FLOOR PLAN
- A102 SECOND FLOOR PLAN
- A121 ROOF PLAN
- A201 EXTERIOR ELEVATIONS
- A300 3D VIEWS
- A301 BUILDING SECTIONS



TAPPÉ
ARCHITECTS, I N C .

PLANNING
DESIGN

SIX EDGERLY PLACE
BOSTON, MA
02116

WWW.TAPPE.COM
TEL 617.451.0200
FAX 617.451.3899

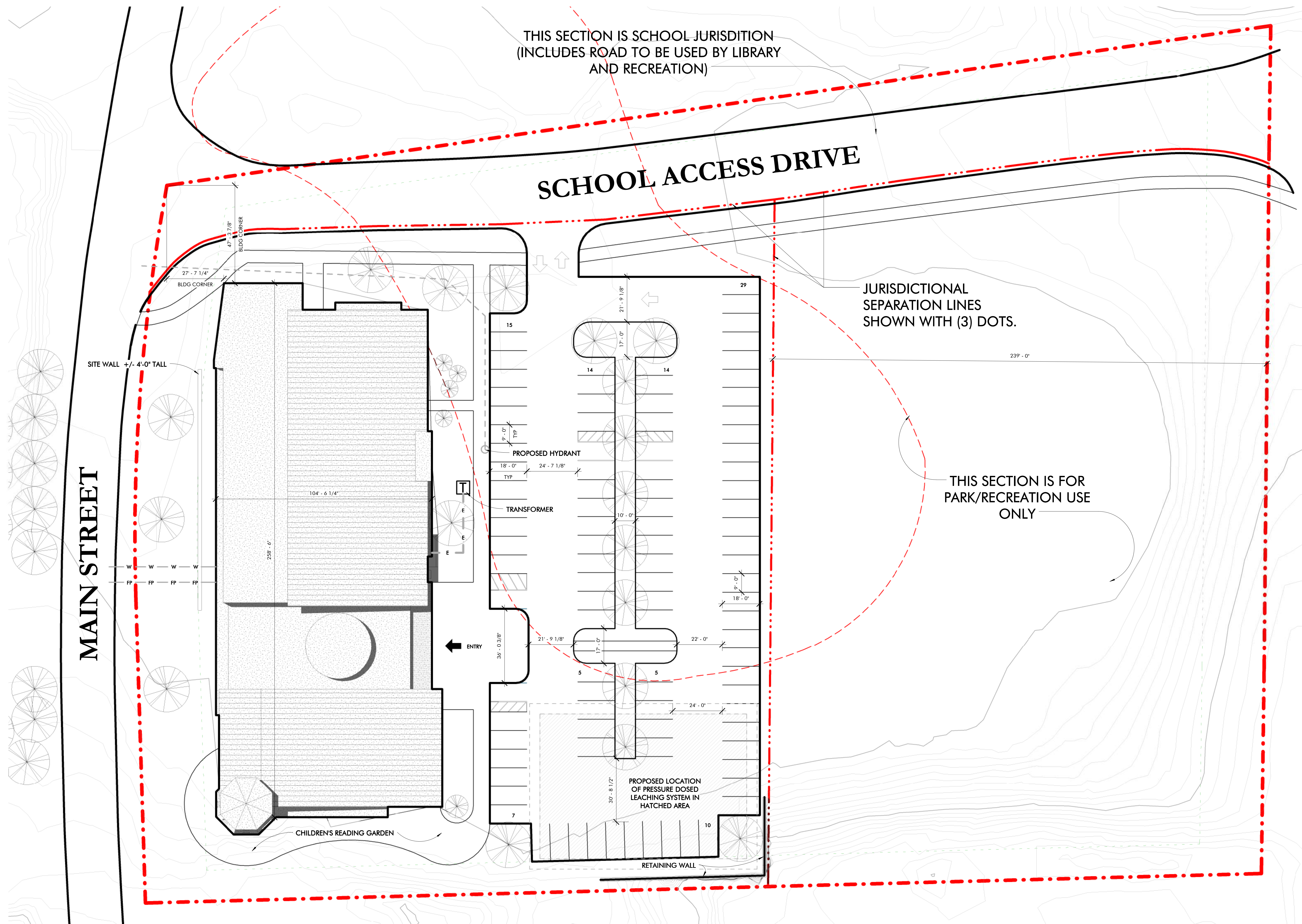
TOWN OF WAYLAND
**THE NEW WAYLAND FREE
PUBLIC LIBRARY**
195 MAIN STREET

Drawing Issue Record:
1.26.17 SCHEMATIC SUBMISSION

Project: A1603.00
Date: 1.26.17
Scale:
Drawn By: cdb
Checked By: CDB
Copyright 2015, Tappé Architects, Inc.

TITLE SHEET

G001



THIS SECTION IS SCHOOL JURISDICTION
(INCLUDES ROAD TO BE USED BY LIBRARY
AND RECREATION)

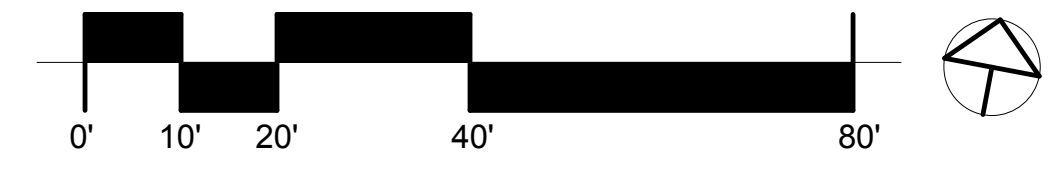
SCHOOL ACCESS DRIVE

JURISDICTIONAL
SEPARATION LINES
SHOWN WITH (3) DOTS.

THIS SECTION IS FOR
PARK/RECREATION USE
ONLY

MAIN STREET

Parking Explanation:
The parking layout has been designed so that it will all fit within the jurisdictional boundary of the library parcel. The concept for the parking plan was to create something accommodating to the appropriate number of vehicles but also make it in a way that reduced the feeling of a massive parking lot in front of the building. Achieving this while minimizing the walk distance to the library door was key and is accomplished in the plan. The parking was also designed to be simply understood by any driver and safe while building connections to the adjacent school and recreation areas.



TOWN OF WAYLAND
**THE NEW WAYLAND FREE
PUBLIC LIBRARY**
195 MAIN STREET

Drawing Issue Record:	1.26.17	SCHEMATIC SUBMISSION
-----------------------	---------	----------------------

Project: A1603.00
Date: 1.26.17
Scale: 1" = 20'-0"
Drawn By: CDB
Checked By: CDB
Copyright 2015, Tappé Architects, Inc.

SITE PLAN

AS100



TAPPÉ
ARCHITECTS, INC.

PLANNING
DESIGN

SIX EDGERLY PLACE
BOSTON, MA
02116

WWW.TAPPE.COM
TEL 617.451.0200
FAX 617.451.3899

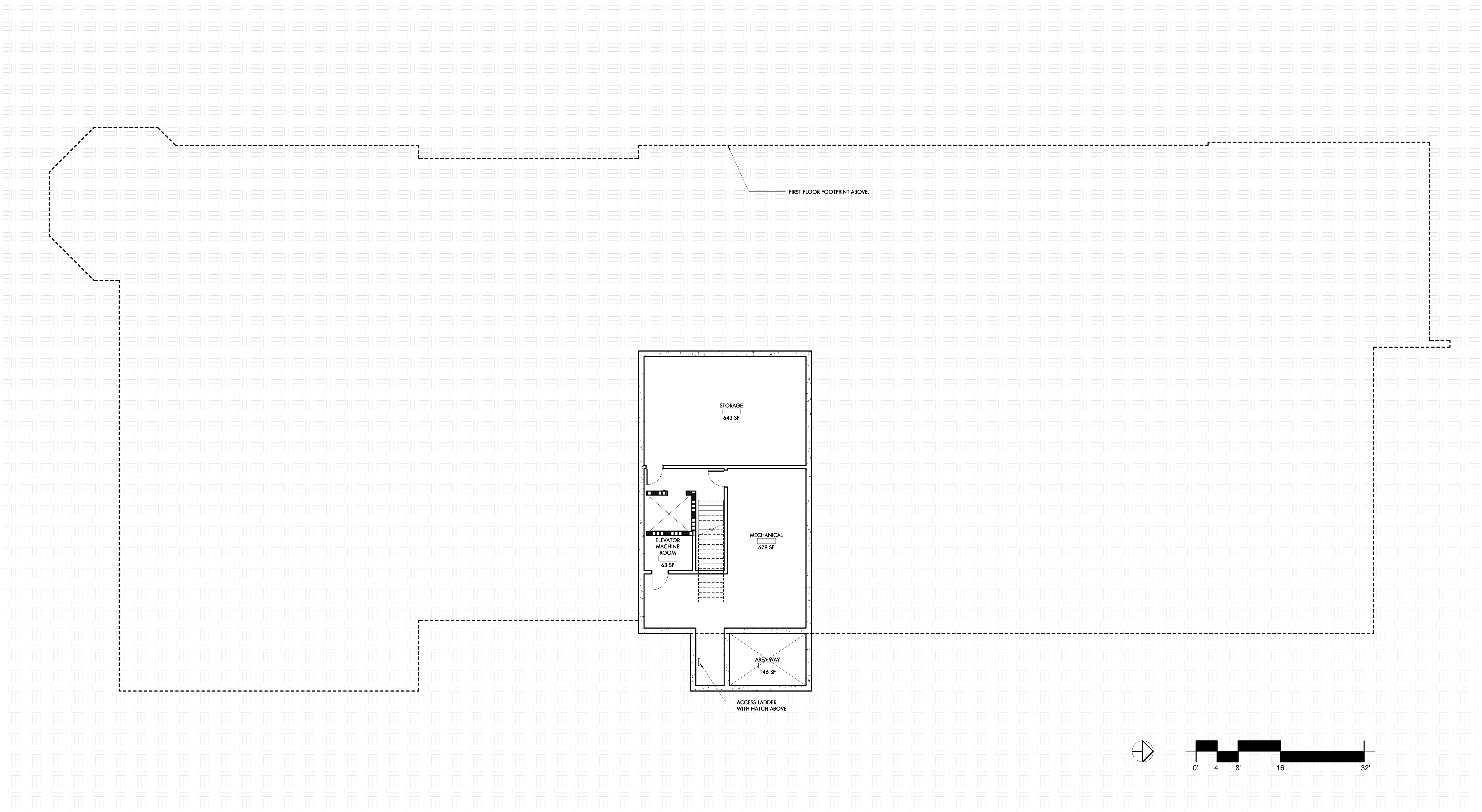
**TOWN OF WAYLAND
THE NEW WAYLAND FREE
PUBLIC LIBRARY
195 MAIN STREET**

Drawing Issue Record:
1.26.17 SCHEMATIC SUBMISSION

Project: A1603.00
Date: 1.26.17
Scale: 1/8" = 1'-0"
Drawn By: CS
Checked By: CDB
Copyright 2015, Tappé Architects, Inc.

BASEMENT PLAN

A100



E
D
C
B
A



TAPPÉ
ARCHITECTS, INC.

PLANNING
DESIGN

SIX EDGERLY PLACE
BOSTON, MA
02116

WWW.TAPPE.COM
TEL 617.451.0200
FAX 617.451.3899

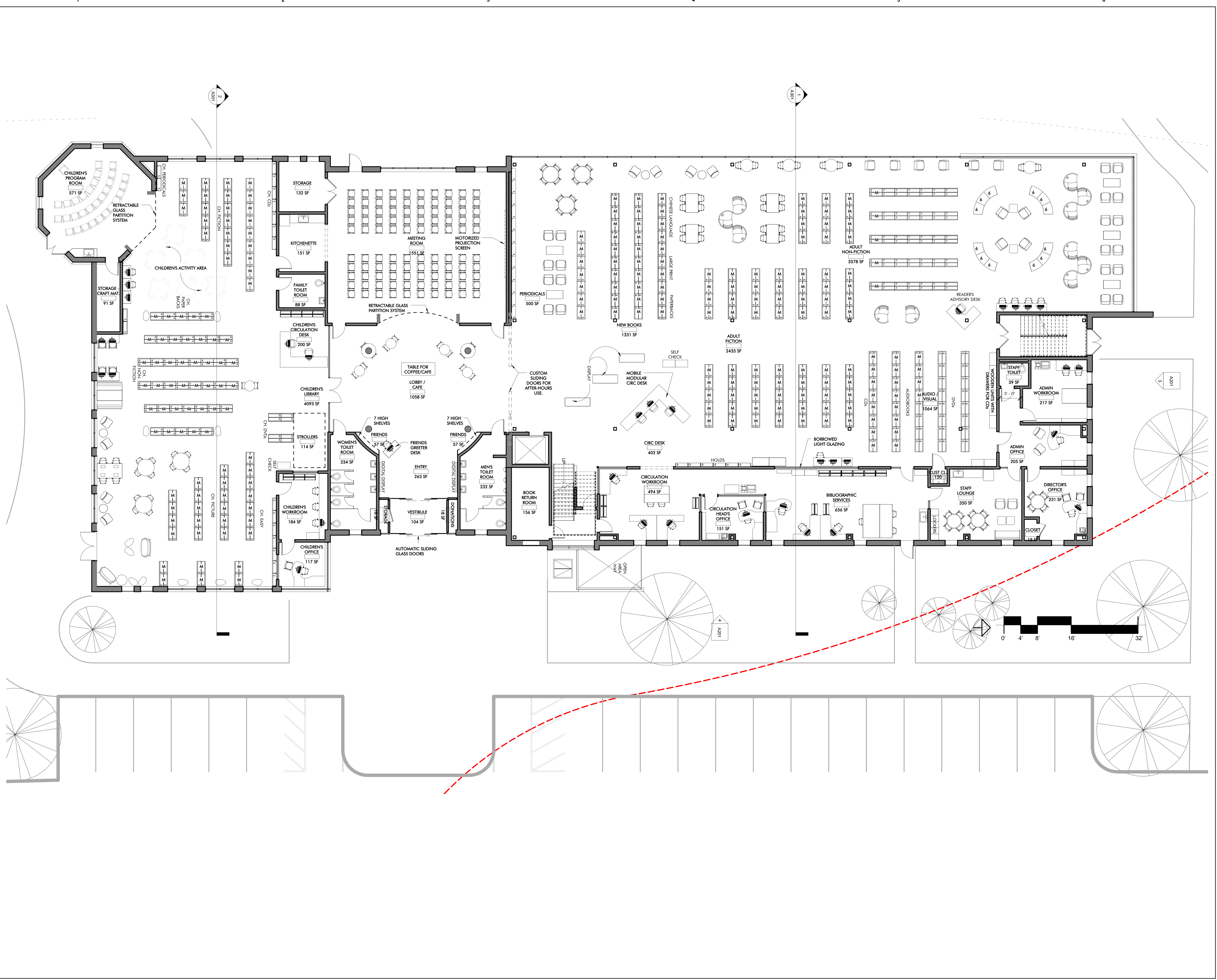
**TOWN OF WAYLAND
THE NEW WAYLAND FREE
PUBLIC LIBRARY
195 MAIN STREET**

Drawing Issue Record:
1.26.17 SCHEMATIC SUBMISSION

Project: A1603.00
Date: 1.26.17
Scale: 1/8" = 1'-0"
Drawn By: CS
Checked By: CDB
Copyright 2015, Tappé Architects, Inc.

FIRST FLOOR PLAN

A101





TAPPÉ
ARCHITECTS, INC.

PLANNING
DESIGN

SIX EDGERLY PLACE
BOSTON, MA
02116

WWW.TAPPE.COM
TEL 617.451.0200
FAX 617.451.3899

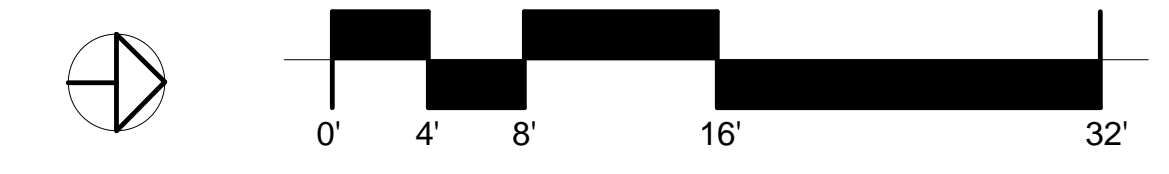
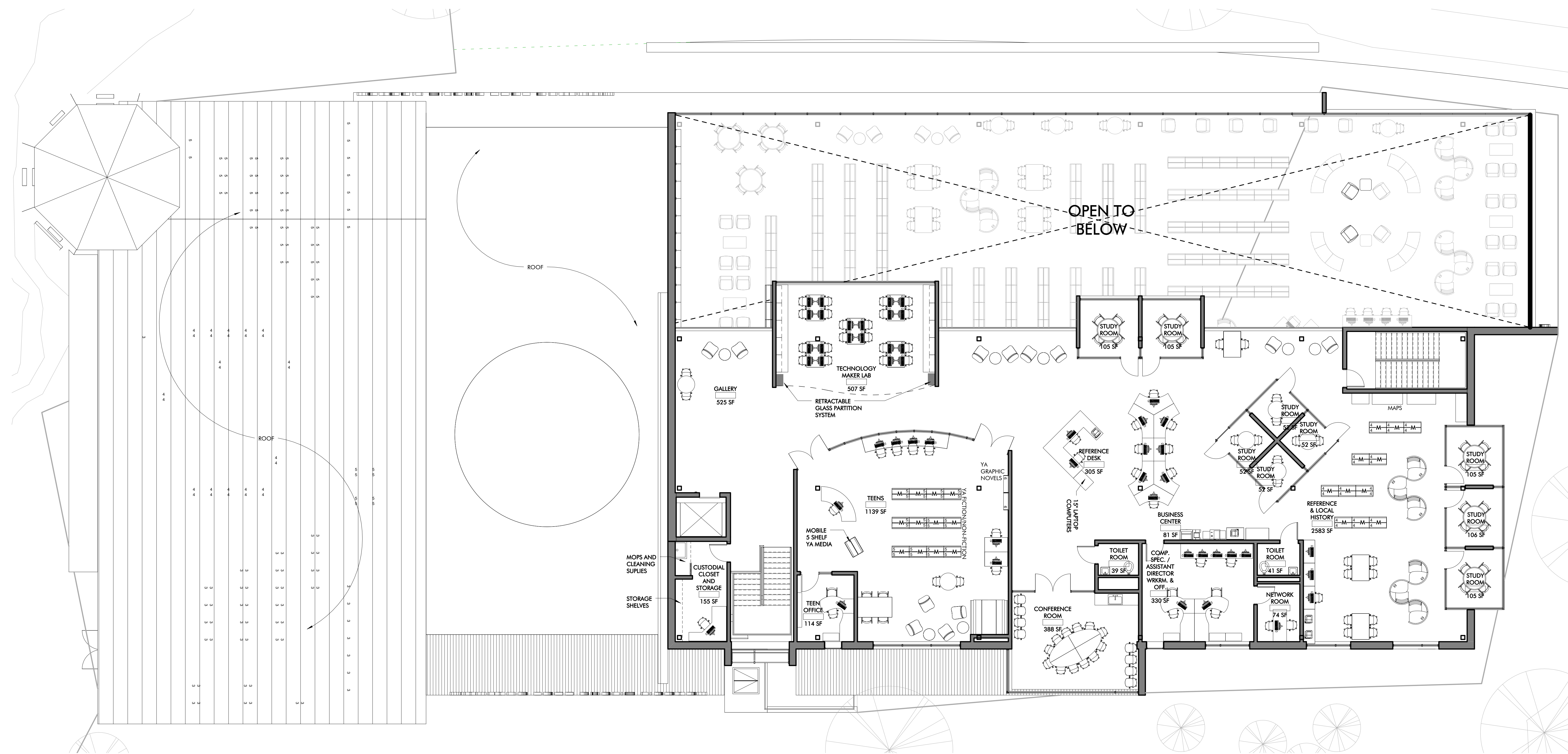
**TOWN OF WAYLAND
THE NEW WAYLAND FREE
PUBLIC LIBRARY
195 MAIN STREET**

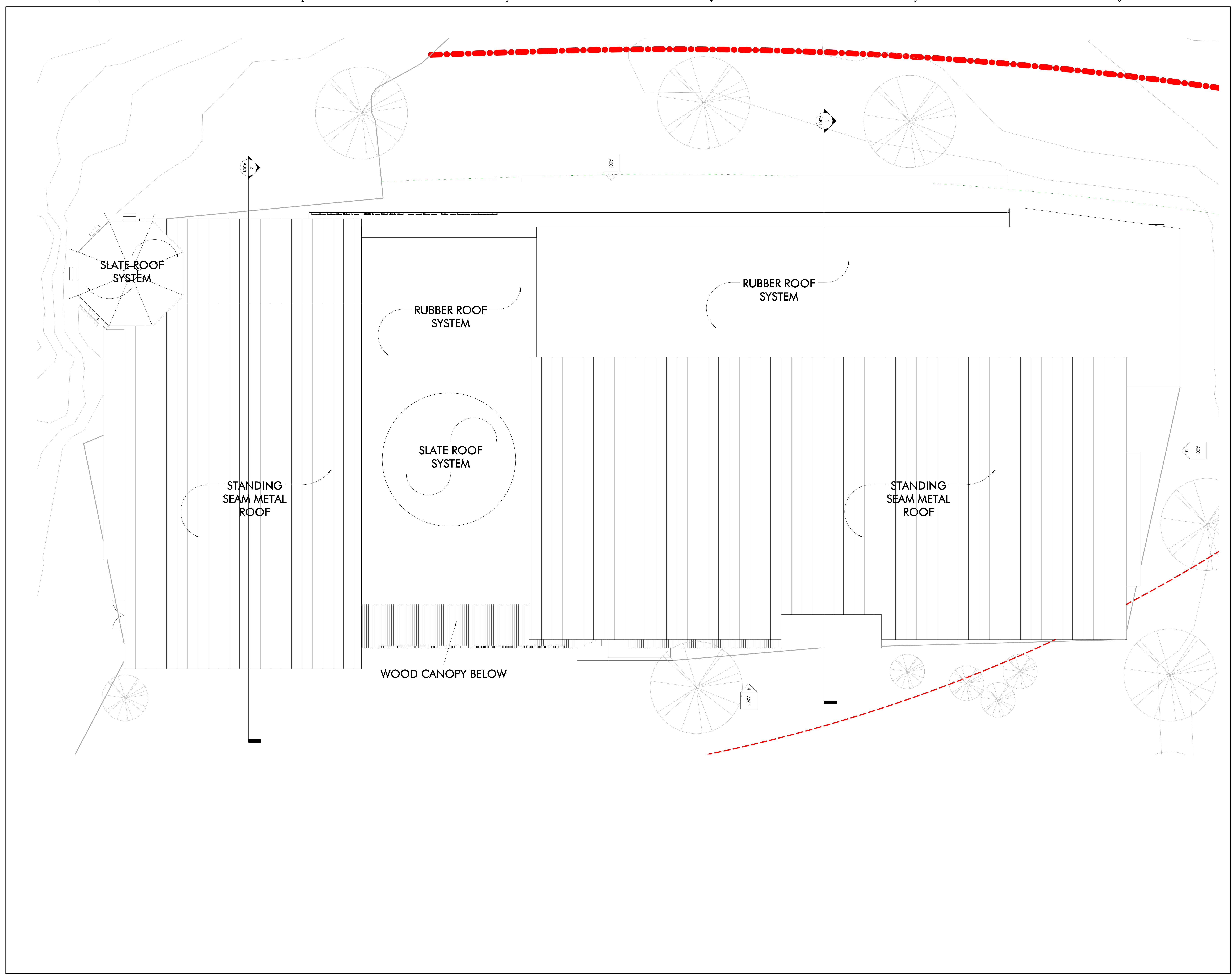
Drawing Issue Record:
1.26.17 SCHEMATIC SUBMISSION

Project: A1603.00
Date: 1.26.17
Scale: 1/8" = 1'-0"
Drawn By: CS
Checked By: CDB
Copyright 2015, Tappé Architects, Inc.

SECOND FLOOR
PLAN

A102





TAPPÉ
ARCHITECTS, INC.

PLANNING
DESIGN

SIX EDGERLY PLACE
BOSTON, MA
02116

WWW.TAPPE.COM
TEL 617.451.0200
FAX 617.451.3899

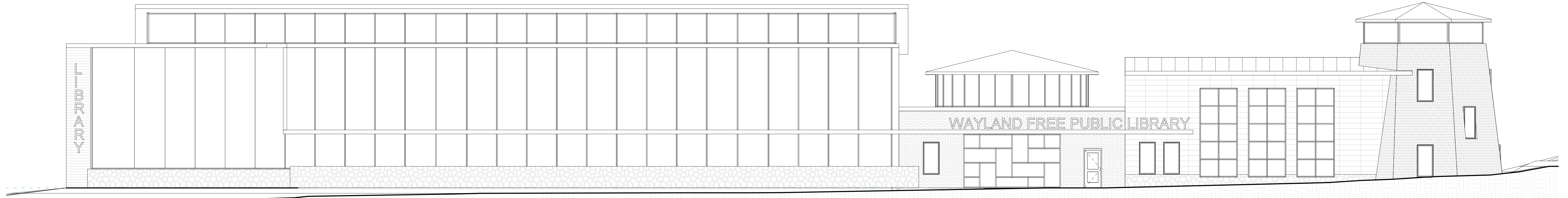
TOWN OF WAYLAND
**THE NEW WAYLAND FREE
PUBLIC LIBRARY**
195 MAIN STREET

Drawing Issue Record:
1.26.17 SCHEMATIC SUBMISSION

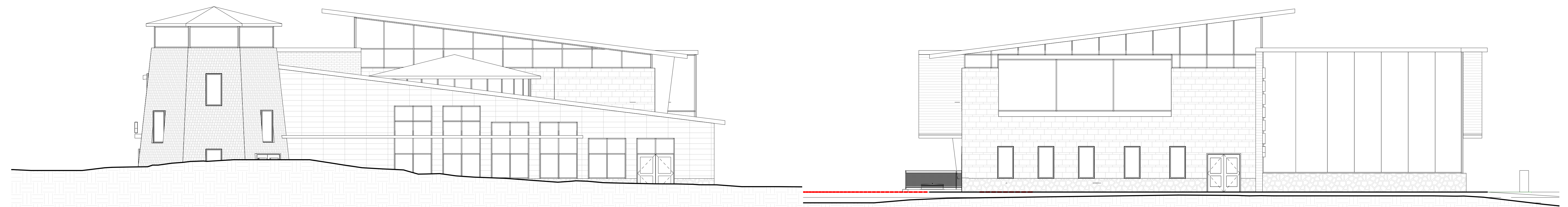
Project: A1603.00
Date: 1.26.17
Scale: 1/8" = 1'-0"
Drawn By: Author
Checked By: Checker
Copyright 2015, Tappe Architects, Inc.

ROOF PLAN

A121

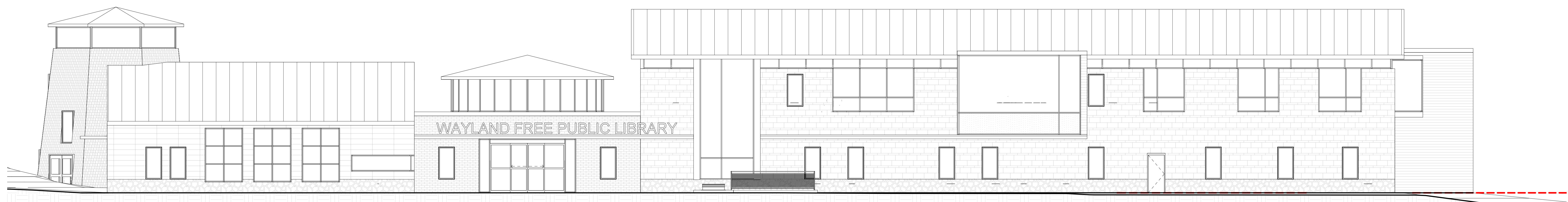


1 WEST ELEVATION
A201 1/8" = 1'-0"

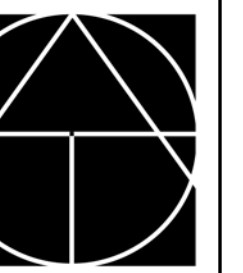


2 SOUTH ELEVATION
A201 1/8" = 1'-0"

3 NORTH ELEVATION
A201 1/8" = 1'-0"



4 EAST ELEVATION
A201 1/8" = 1'-0"



TAPPÉ
ARCHITECTS, INC.

PLANNING
DESIGN

SIX EDGERLY PLACE
BOSTON, MA
02116

WWW.TAPPE.COM
TEL 617.451.0200
FAX 617.451.3899

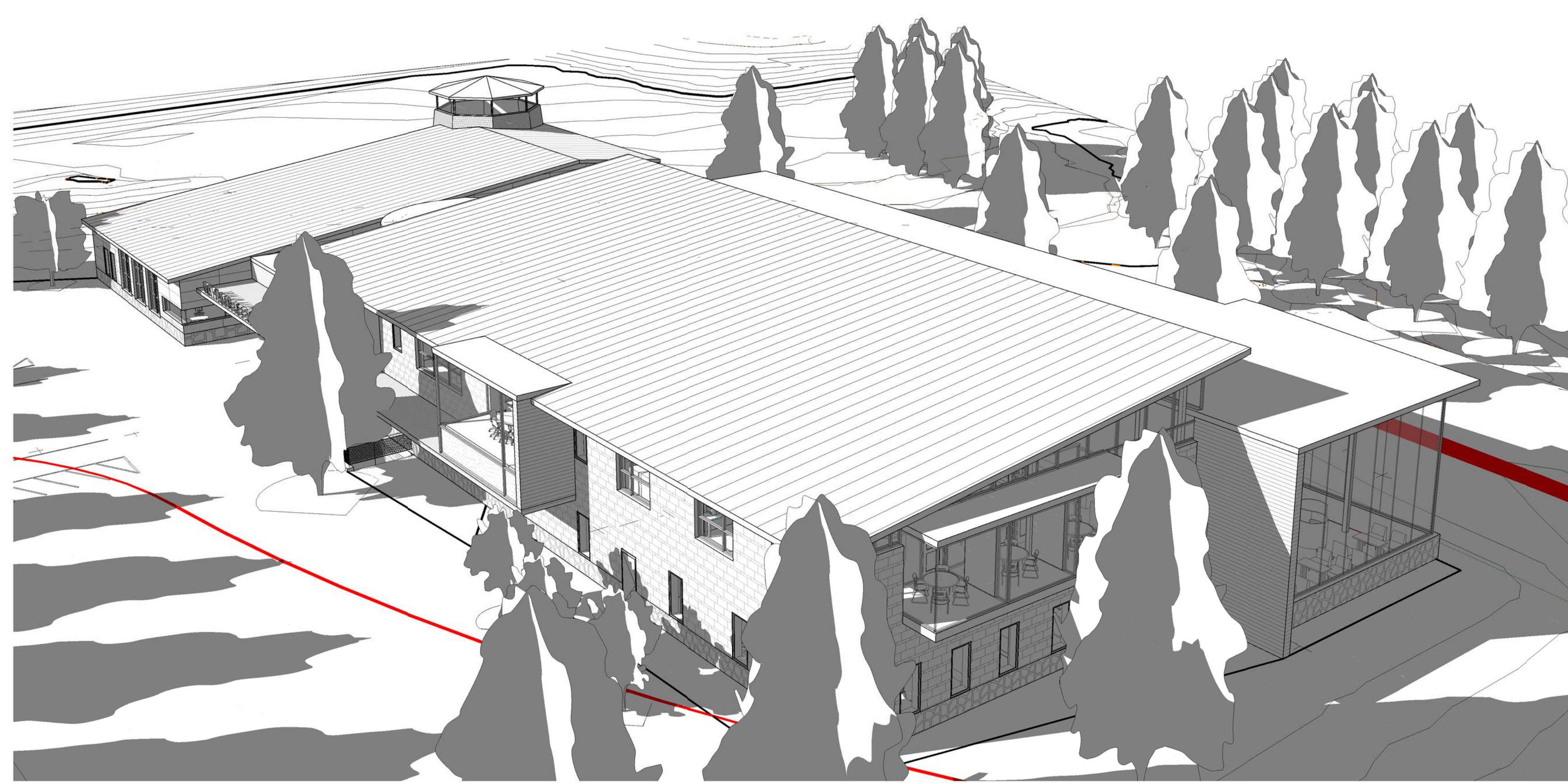
TOWN OF WAYLAND
**THE NEW WAYLAND FREE
PUBLIC LIBRARY**
195 MAIN STREET

Drawing Issue Record:
1.26.17 SCHEMATIC SUBMISSION

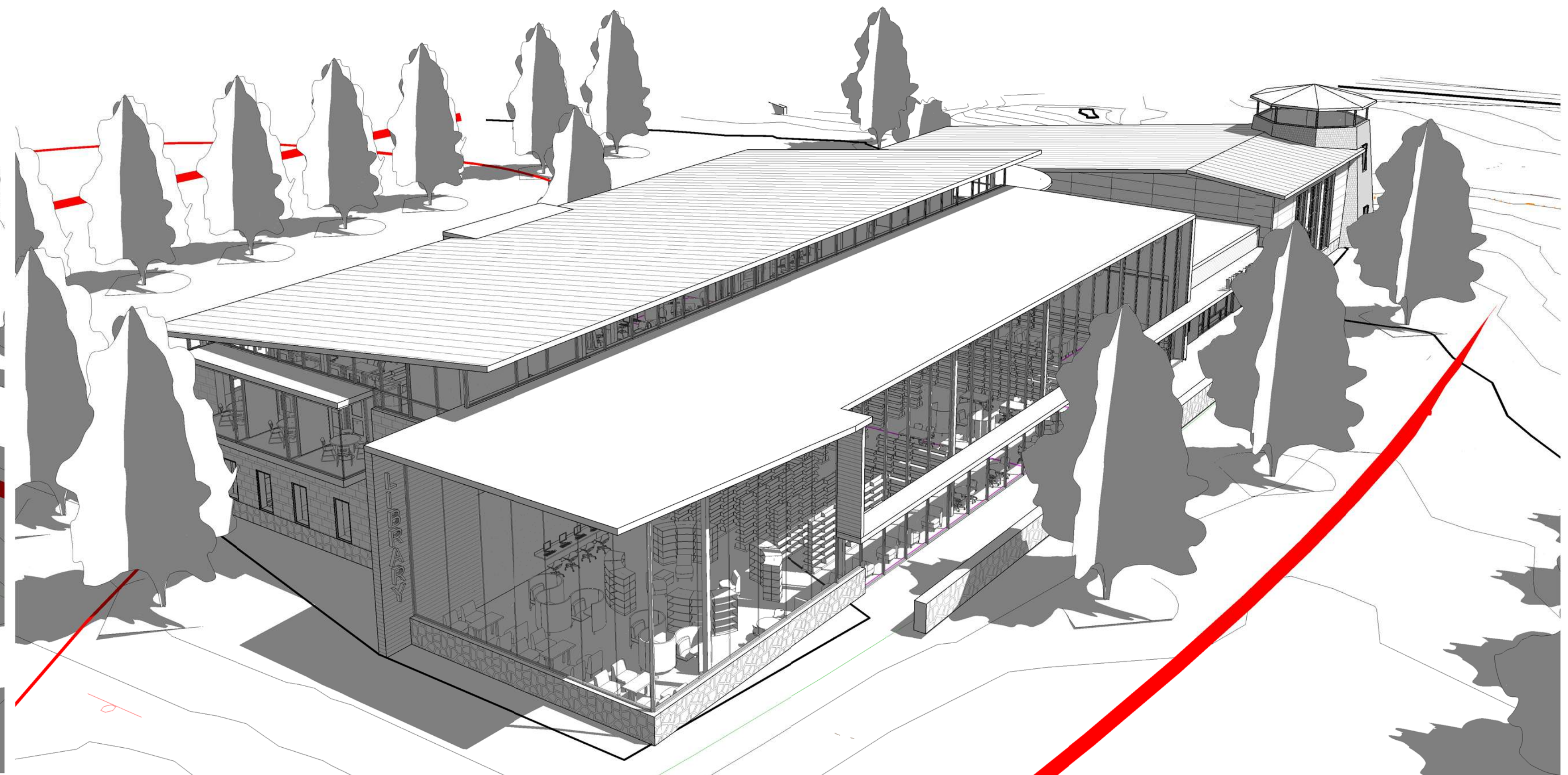
Project: A1603.00
Date: 1.26.17
Scale: 1/8" = 1'-0"
Drawn By: cdb
Checked By: CDB
Copyright 2015, Tappé Architects, Inc.

EXTERIOR
ELEVATIONS

A201



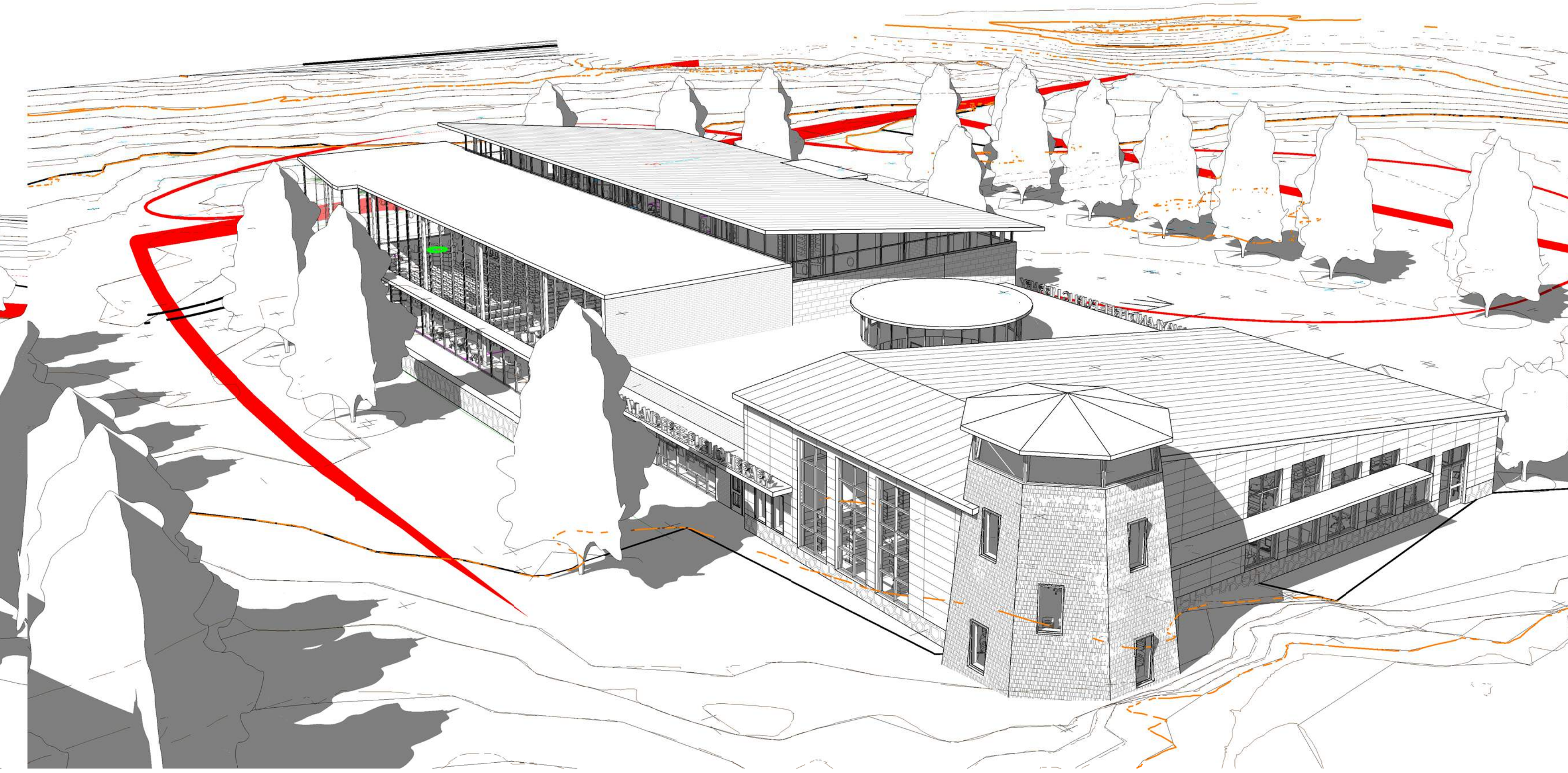
1
A300
NORTHEAST CORNER 3D VIEW



2
A300
NORTHWEST CORNER 3D VIEW



3
A300
SOUTHEAST CORNER 3D VIEW



4
A300
SOUTHWEST CORNER 3D VIEW



TAPPÉ
ARCHITECTS, INC.

PLANNING
DESIGN

SIX EDGERLY PLACE
BOSTON, MA
02116

WWW.TAPPE.COM
TEL 617.451.0200
FAX 617.451.3899

TOWN OF WAYLAND
**THE NEW WAYLAND FREE
PUBLIC LIBRARY**
195 MAIN STREET

Drawing Issue Record:
1.26.17 SCHEMATIC SUBMISSION

Project: A1603.00
Date: 1.26.17
Scale:
Drawn By: CDB
Checked By: CDB
Copyright 2015, Tappé Architects, Inc.

3D VIEWS

A300



TAPPÉ
ARCHITECTS, INC.

PLANNING
DESIGN

SIX EDGERLY PLACE
BOSTON, MA
02116

WWW.TAPPE.COM
TEL 617.451.0200
FAX 617.451.3899

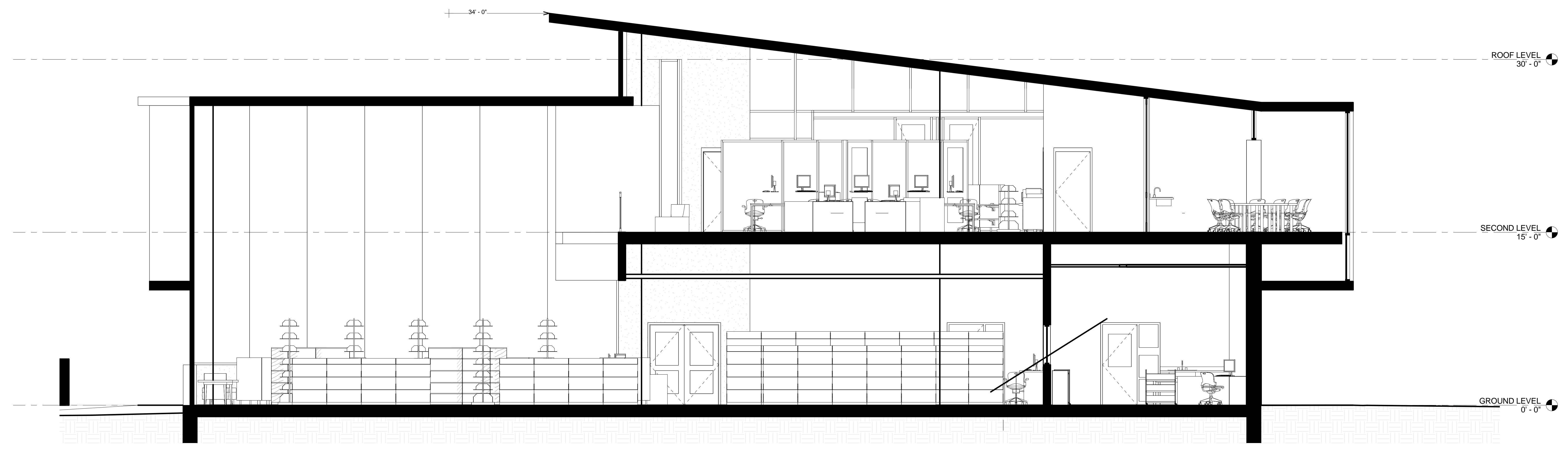
**TOWN OF WAYLAND
THE NEW WAYLAND FREE
PUBLIC LIBRARY
195 MAIN STREET**

Drawing Issue Record:
1.26.17 SCHEMATIC SUBMISSION

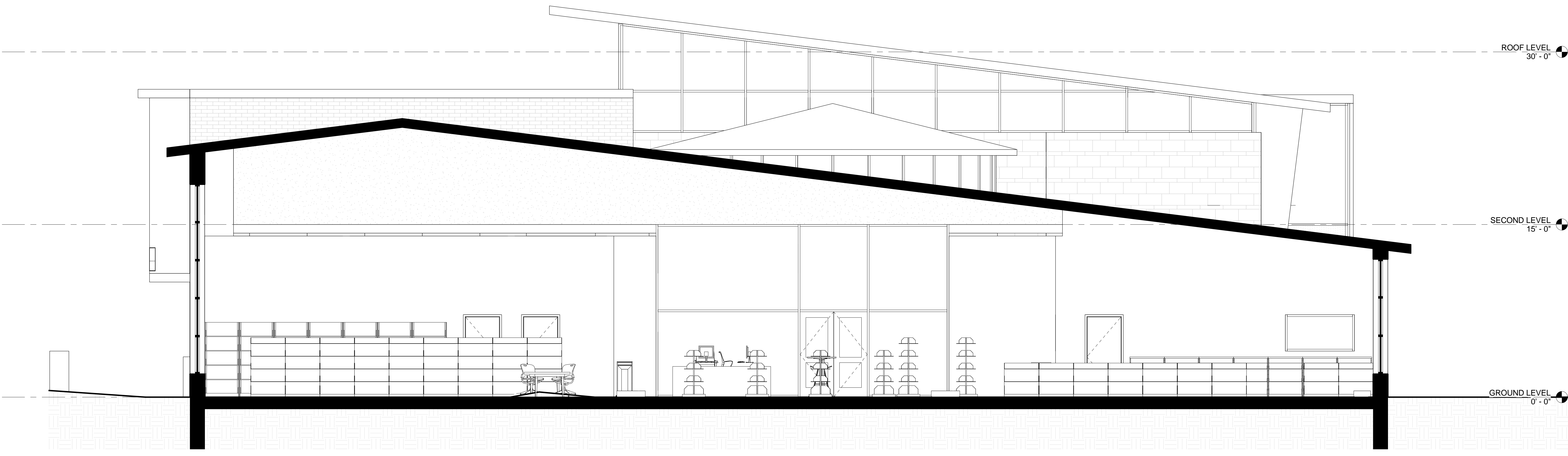
Project: A1603.00
Date: 1.26.17
Scale: 1/4" = 1'-0"
Drawn By: CDB
Checked By: CDB
Copyright 2015, Tappé Architects, Inc.

BUILDING SECTIONS

A301



1 Section 1
A301 1/4" = 1'-0"



2 Section 2
A301 1/4" = 1'-0"