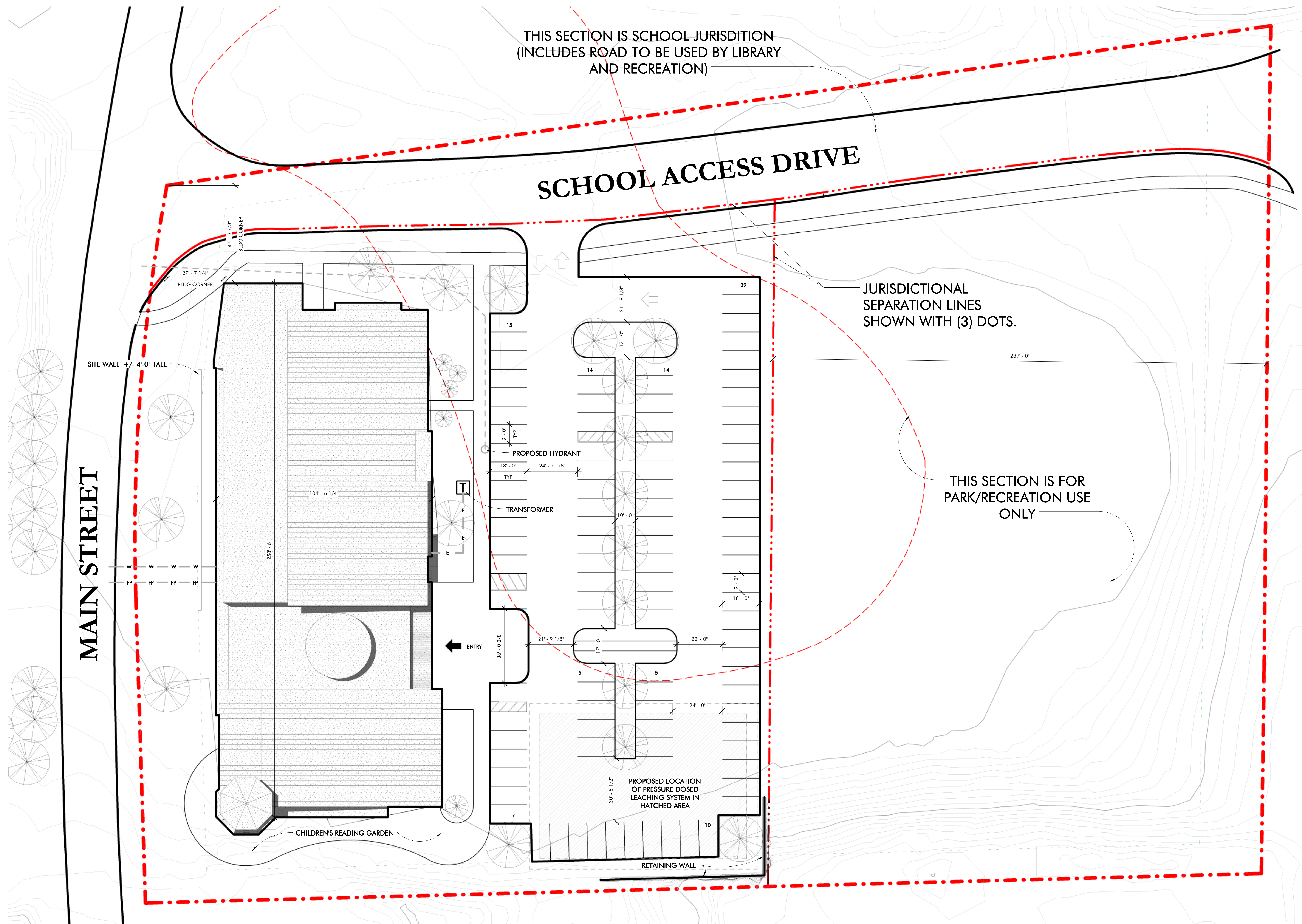


WAYLAND LIBRARY SITE PLAN

LIBRARY SCOPE

2016-10-3





THIS SECTION IS SCHOOL JURISDICTION
(INCLUDES ROAD TO BE USED BY LIBRARY
AND RECREATION)

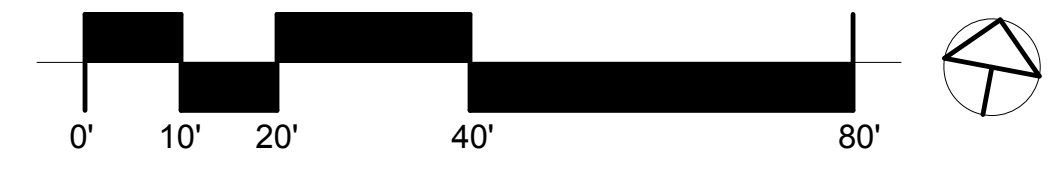
SCHOOL ACCESS DRIVE

JURISDICTIONAL
SEPARATION LINES
SHOWN WITH (3) DOTS.

THIS SECTION IS FOR
PARK/RECREATION USE
ONLY

MAIN STREET

Parking Explanation:
The parking layout has been designed so that it will all fit within the jurisdictional boundary of the library parcel. The concept for the parking plan was to create something accommodating to the appropriate number of vehicles but also make it in a way that reduced the feeling of a massive parking lot in front of the building. Achieving this while minimizing the walk distance to the library door was key and is accomplished in the plan. The parking was also designed to be simply understood by any driver and safe while building connections to the adjacent school and recreation areas.



PRELIMINARY DESIGN

Drawing Issue Record:	1.26.17	SCHEMATIC SUBMISSION
-----------------------	---------	----------------------

Project: A1603.00
Date: 1.26.17
Scale: 1" = 20'-0"
Drawn By: CDB
Checked By: CDB
Copyright 2015, Tappé Architects, Inc.

SITE PLAN

AS100



TAPPÉ
ARCHITECTS, INC.

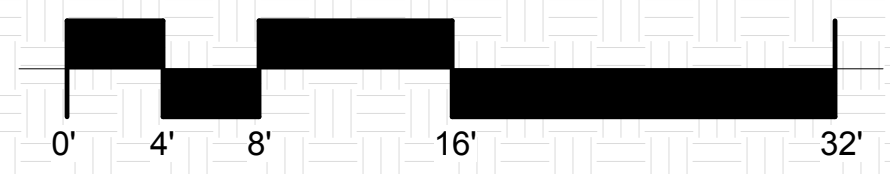
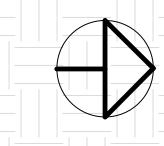
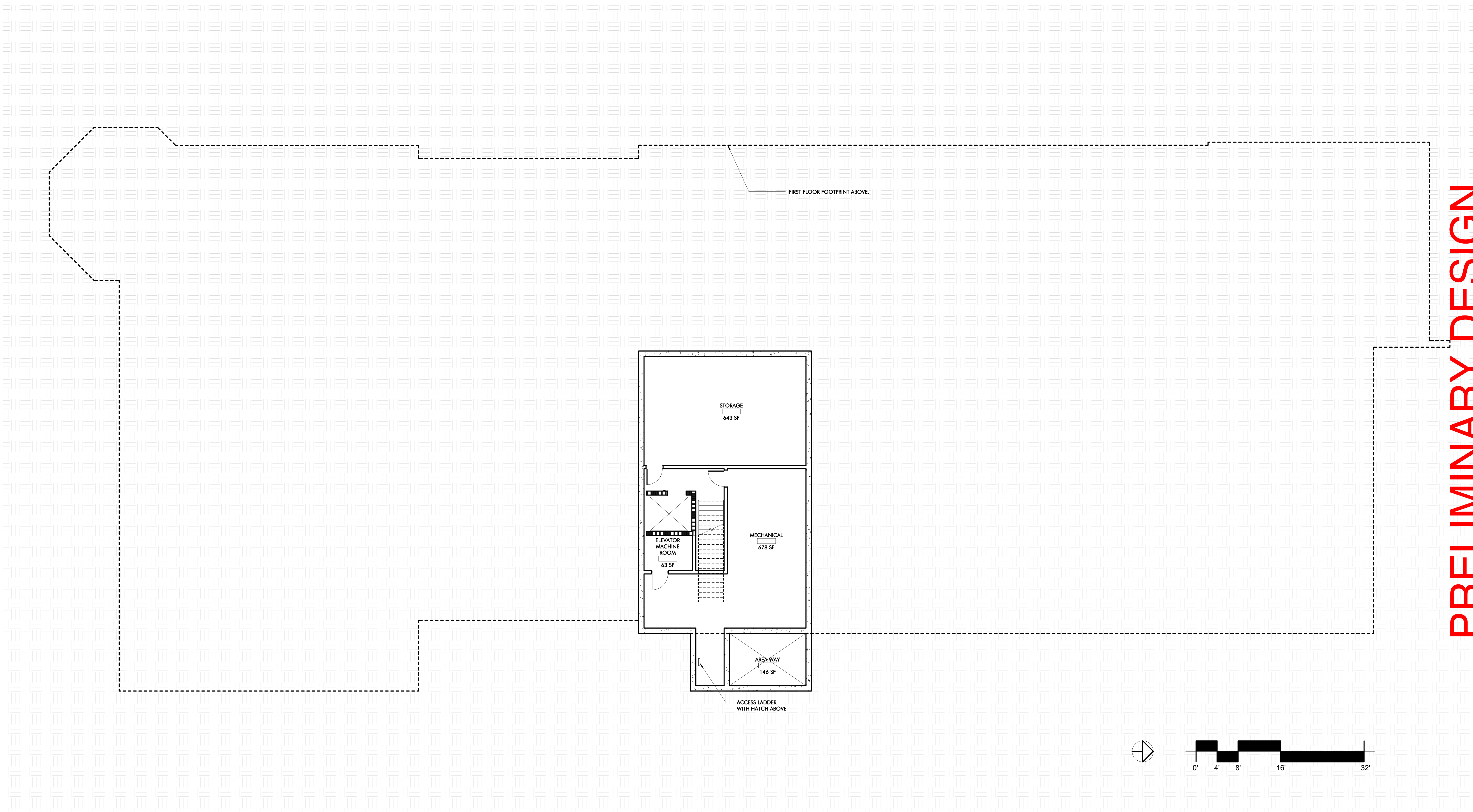
PLANNING
DESIGN

SIX EDGERLY PLACE
BOSTON, MA
02116

WWW.TAPPE.COM
TEL 617.451.0200
FAX 617.451.3899

TOWN OF WAYLAND
**THE NEW WAYLAND FREE
PUBLIC LIBRARY**
195 MAIN STREET

PRELIMINARY DESIGN



Drawing Issue Record:
1.26.17 SCHEMATIC SUBMISSION

Project: A1603.00
Date: 1.26.17
Scale: 1/8" = 1'-0"
Drawn By: CS
Checked By: CDB
Copyright 2015, Tappé Architects, Inc.

BASEMENT PLAN

A100



TAPPÉ ARCHITECTS, INC.

PLANNING DESIGN

SIX EDGERLY PLACE BOSTON, MA 02116

WWW.TAPPE.COM TEL 617.451.0200 FAX 617.451.3899

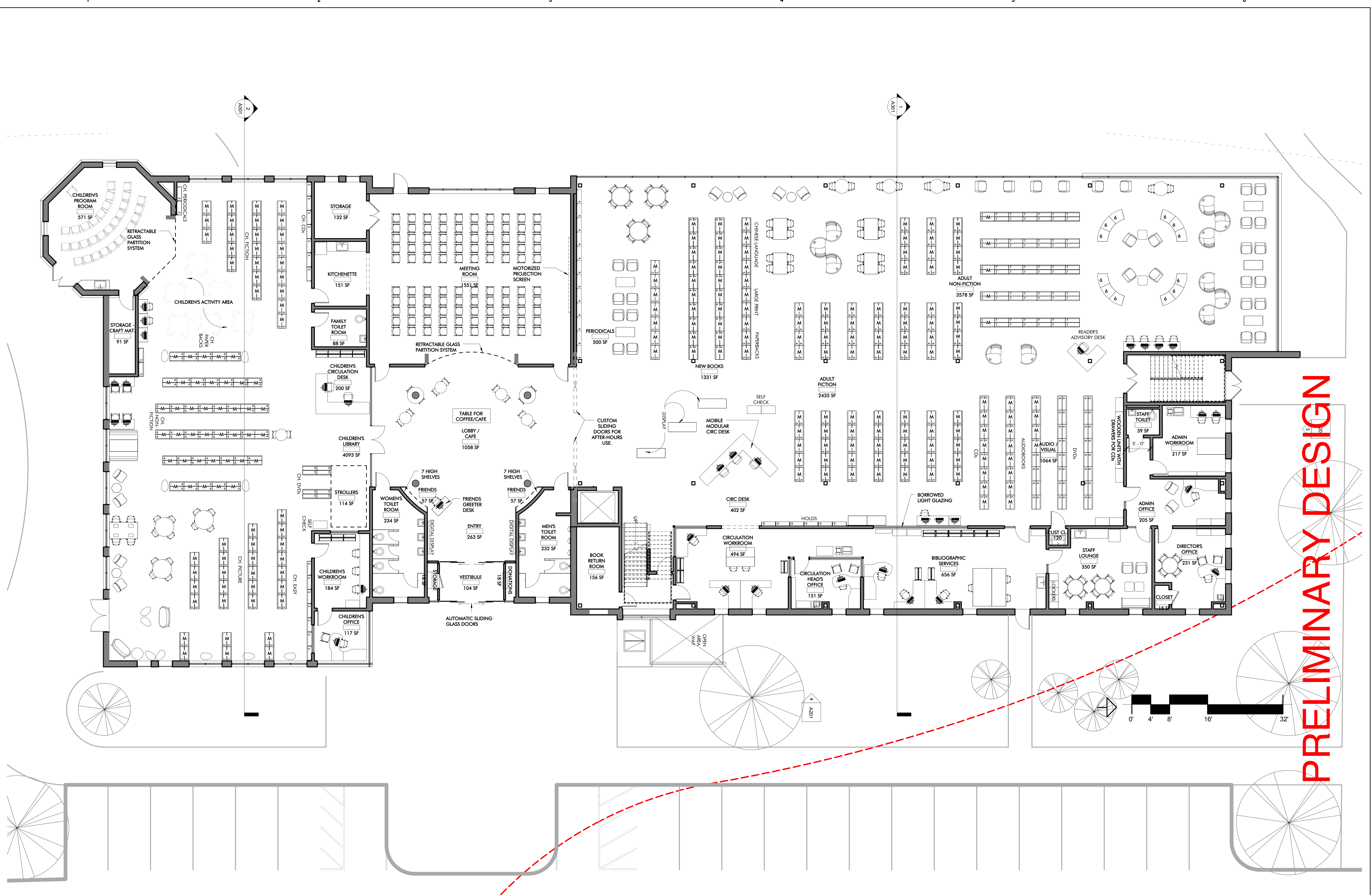
TOWN OF WAYLAND THE NEW WAYLAND FREE PUBLIC LIBRARY 195 MAIN STREET

Drawing Issue Record: 1.26.17 SCHEMATIC SUBMISSION

Project: A1603.00 Date: 1.26.17 Scale: 1/8" = 1'-0" Drawn By: CS Checked By: CDB Copyright 2015, Tappé Architects, Inc.

FIRST FLOOR PLAN

A101



PRELIMINARY DESIGN



TAPPÉ
ARCHITECTS, INC.

PLANNING
DESIGN

SIX EDGERLY PLACE
BOSTON, MA
02116

WWW.TAPPE.COM
TEL 617.451.0200
FAX 617.451.3899

TOWN OF WAYLAND
**THE NEW WAYLAND FREE
PUBLIC LIBRARY**
195 MAIN STREET

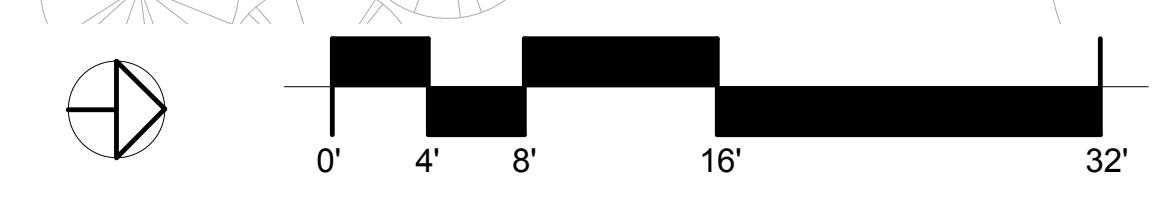
Drawing Issue Record:
1.26.17 SCHEMATIC SUBMISSION

Project: A1603.00
Date: 1.26.17
Scale: 1/8" = 1'-0"
Drawn By: CS
Checked By: CDB
Copyright 2015, Tappé Architects, Inc.

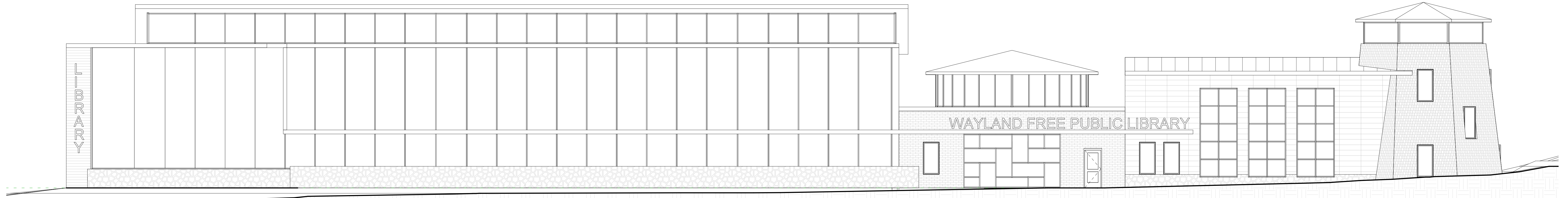
SECOND FLOOR
PLAN

A102

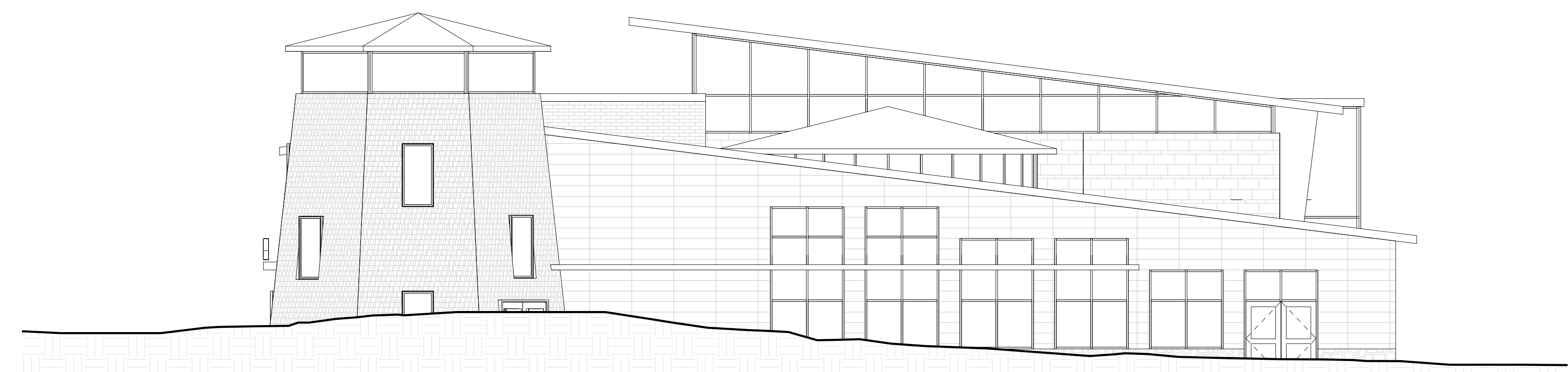
PRELIMINARY DESIGN



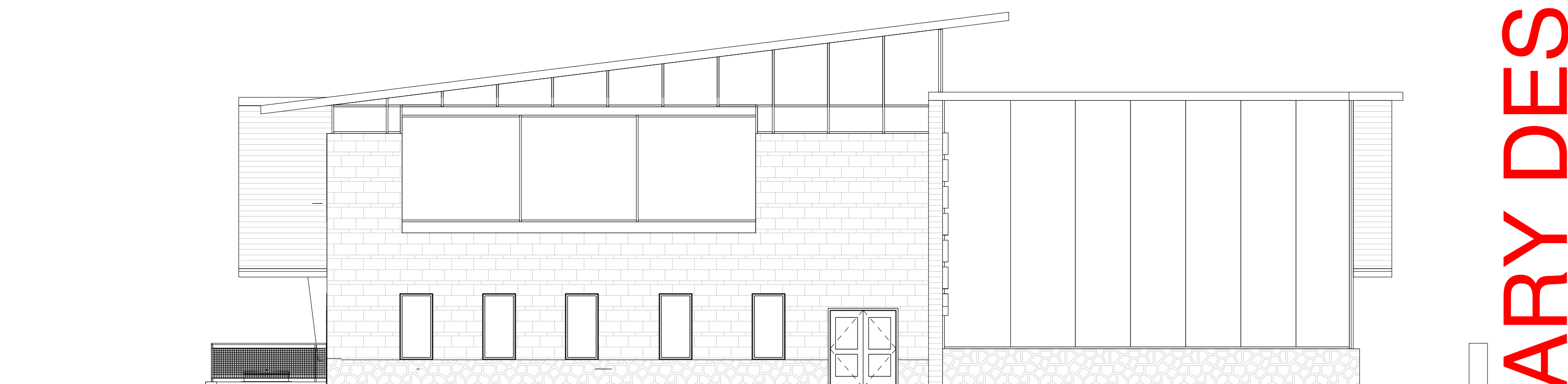
1 2 3 4 5 6



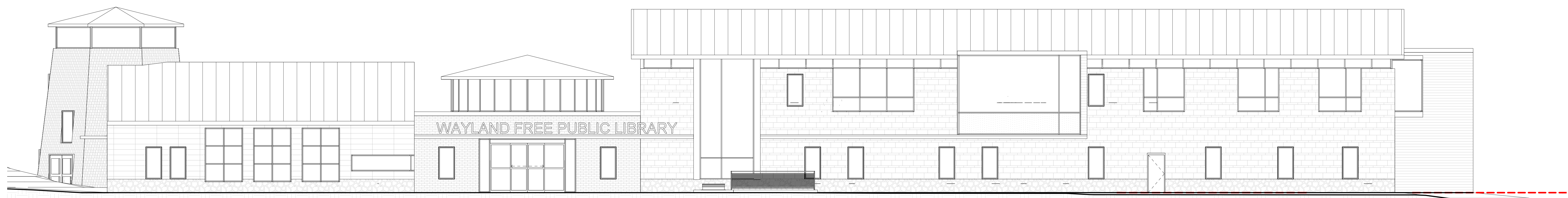
1 WEST ELEVATION
A201 1/8" = 1'-0"



2 SOUTH ELEVATION
A201 1/8" = 1'-0"



3 NORTH ELEVATION
A201 1/8" = 1'-0"



4 EAST ELEVATION
A201 1/8" = 1'-0"

PRELIMINARY DESIGN



TAPPÉ
ARCHITECTS, INC.
PLANNING
DESIGN

SIX EDGERLY PLACE
BOSTON, MA
02116

WWW.TAPPE.COM
TEL 617.451.0200
FAX 617.451.3899

TOWN OF WAYLAND
**THE NEW WAYLAND FREE
PUBLIC LIBRARY**
195 MAIN STREET

Drawing Issue Record:	
1.26.17	SCHEMATIC SUBMISSION

Project: A1603.00
Date: 1.26.17
Scale: 1/8" = 1'-0"
Drawn By: cdb
Checked By: CDB
Copyright 2015, Tappé Architects, Inc.

EXTERIOR
ELEVATIONS

A201